

## RPR Series

### Remote recessed architectural fixture



#### Construction

- Thermoplastic rectangular fixture with additional round trim-plate, white finish
- All-metal backbox enclosure
- Fixed optics, optimized light distribution for ceiling heights up to 12 ft.
- Four high-intensity LEDs with redundant connections; 140 lm/W, CCT 5000K
- High power factor rating making it compatible with central systems

#### Options

- Plenum-rated enclosure
- Black thermoplastic decorative trim-plates
- Fixed, square light distribution pattern

#### Mounting

- Easily spring mounted in sheetrock ceiling
- Recessed installation in t-bar suspended ceilings

#### Electronics

- AC model compatible with Lightalarms® Mini Inverters
- DC model available with Lightalarms® 6-24 battery units

#### Approvals

- Listed UL-924 for damp locations: 50° to 104°F
- NSF listed for splash/non-food zone applications

#### Warranty (subject to proper installation and maintenance)

Detailed warranty terms located online at: [www.lightalarms.com](http://www.lightalarms.com)



#### Photometric performance

The RPR Series has a fixed lighting distribution, optimized by design for ceiling heights up to 12 ft. Along an office corridor the space coverage ranges from 62 to 80 feet. The square distribution pattern option covers a surface of 729 square feet.

Table A: Standard unit 6-ft wide corridor<sup>1</sup>

Mounting height	Lumens	Spacing center-to-center
8 ft	680	62 ft
9 ft		68 ft
10 ft		80 ft
12 ft		72 ft

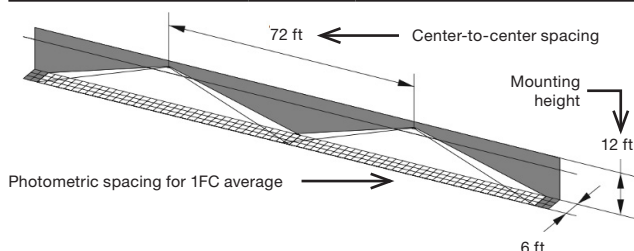
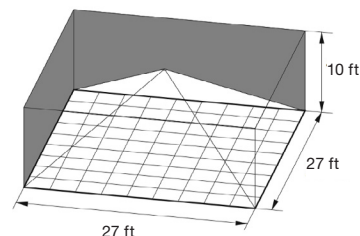


Table B: Option "square distribution pattern" – single unit coverage<sup>1</sup>

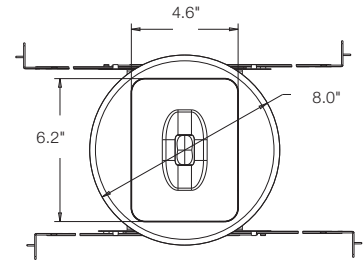
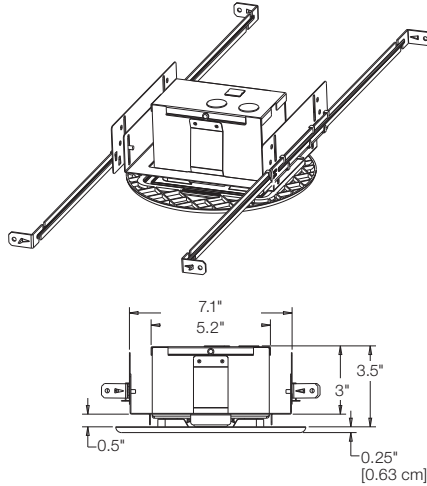
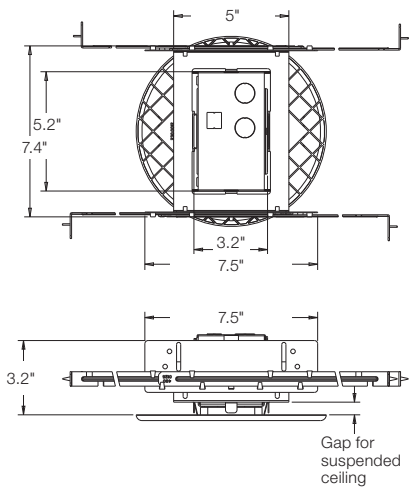
Mounting height	Lumens	Room size	Room surface
10 ft	717	27 ft x 27 ft	729 square feet

<sup>1</sup>Note: Illumination levels as per the Life Safety Code (NFPA 101): Average 1 fc, Minimum 0.1 fc, Max-to-min ratio 40:1.  
Typical reflectance levels of walls/ceiling/floor: 80/50/20.

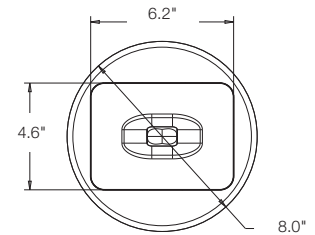
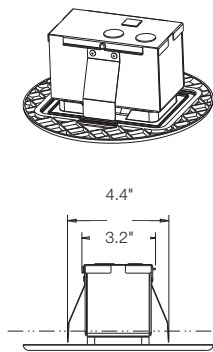
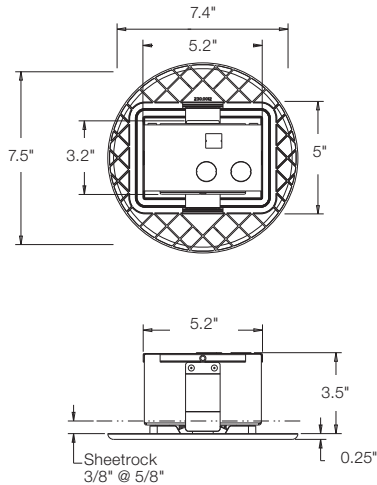


**Dimensions** (Dimensions are approximate and subject to change)

**Recessed suspended ceiling mount**



**Recessed sheetrock ceiling mount**



**Electrical ratings**

Model	V	Hz	A	W	P. F.
AC	120-277VAC	50/60	0.06-0.035	7.3-9.2	≥0.9
DC	6-24VDC	N/A	1.09-0.33	6.50-7.25	N/A

**Ordering format**

Series	Color	Voltage	Options
RPR= Recessed plastic remote fixture	B= Black W= Factory white	AC= 120 to 277VAC, 50/60Hz DC= 6 to 24VDC	Blank= Corridor lighting pattern P= Plenum/type IC rated <sup>1</sup> SQ= Square distribution pattern
Example: RPRWACSQ			

<sup>1</sup>Available with corridor or square lighting pattern