



SIMPLICITY™ Series

Die-Cast Aluminum, 8 or 6-inch Exit Sign
LED Edge-Lit, AC only or Self-Powered
Listed to UL 924 Standards

The Simplicity™ Series exit sign is a snap to install and complements any decor. Using energy saving LED technology, the Simplicity Series features state-of-the-art acrylic panels and precision etched lettering for maximum clarity, visibility and aesthetic appeal.

FEATURES

- **RELIABILITY:** The Simplicity Series comes complete with a five-year warranty.
- **POWER REQUIREMENTS:** 120/277 Vac, 60Hz, 0.3/0.15A.
- **HOUSING:** Modular sign allows for easy installation. Crafted from precision die-cast aluminum. Lightweight and rugged. Universal backbox for all mounting applications.
- **LED STRIP:** LED Strip design allows for rotation for either ceiling or wall mounting. The LED Strip light source offers unequalled energy efficiency with long life legend illumination.
- **TRIM PLATE:** Innovative, aesthetically pleasing design in your choice of either flat, dome, or pyramid shape to accent any decor perfectly.
- **FACE PANEL:** Our LED edge-lit acrylic panels are the pinnacle of the industry. State-of-the-art technology allows us to extrude the acrylic panels resulting in maximum clarity and illumination proven superior to molded panels. Furthermore, our precision etched letters further enhance clarity and illumination.
- **MODULAR DESIGN:** A retainer clip allows for face panel installation that is a “snap” while ensuring a tight fit.
- **DIE-CAST ALUMINUM:** Trim ring used for recessed application, ensures proper seal, and eliminates light leaks.
- **SELF-POWERED UNITS**
 - ♦ **BATTERY:** Long-life, maintenance-free, sealed Nickel-Cadmium battery illuminates the sign for a minimum of 90 min. in emergency mode.
 - ♦ **CHARGER:** Supplied with an automatic, precise constant current charger. The charger is temperature-compensated, short-circuit protected and capable of recharging the battery in accordance with UL 924 standards.

SELF-TEST / DIAGNOSTIC FEATURE

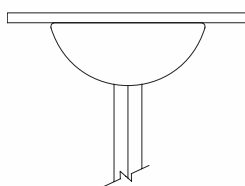
(Optional)

The self-test/diagnostic feature continuously monitors the charger assembly, battery and LED assembly current. If a fault is indicated, the external service required indicator will illuminate. The internal fault indicators will then indicate the nature of the fault. The self-test/diagnostic will self test for 30 seconds every 30 days, 30 minutes every 60 days and 90 minutes annually. Meets NFPA 101 Life Safety Code requirements for periodic testing.

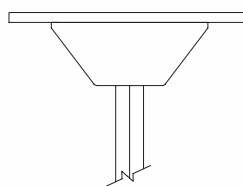
POWER CONSUMPTION CHART

Model	AC Specs		DC Specs	
AC-Only	120 to 277 Vac	2W	-	-
AC/DC	120 to 277 Vac	2W	6 to 24 Vdc	Less than 2W
Self-Powered	120 to 277 Vac	2.5W	NiCad Battery	Min. 90 minutes

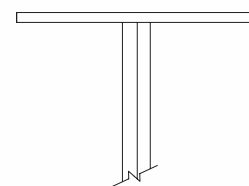
CHOICE OF TRIM PLATES



Dome Trim



Pyramid trim



Flat Trim

- Dome or pyramid can be pendant mounted.
- Flat trim for recessed ceilings only. Can be used with drywall ceiling.

ARROW (CHEVRON) DESIGNATION



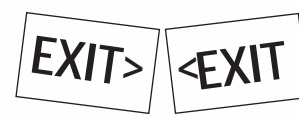
Chevron Right (CR)



Chevron Left (CL)



Single Face
Double Chevron (1DC)
Double Face
Double Chevron (2DC)



Double Face
Single Chevron (CLCR)
Represents each side of a
double face panel.

*Wording and chevron's not to scale. Illustration purposes only.

SIMPLICITY™ Series



EASY INSTALLATION

- A quick connect plug is used to wire the LED strip to the charger and power supply.
- Torsion springs on the trim plate slide into the back box to provided a tight seal between both.
- The modular design results in easy “snap in” of face panel.

OPTIONS

(Add suffix to Model No.)

- Flasher/Buzzer (Self-powered only)-**FB**
- Fire Alarm Activated Flasher-**FAF**
- Dual Circuit (AC models only)-**2**
- Self-Test Diagnostics (Self-powered only)-**D**

For special wording, contact factory.

ACCESSORIES

(Add suffix to Model No.)

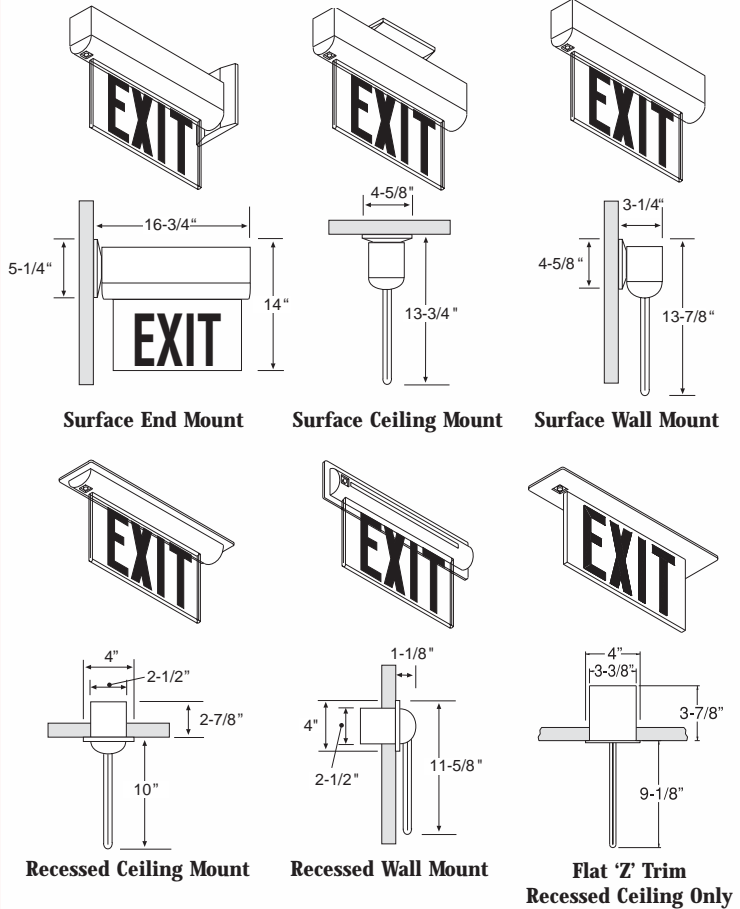
- Pendant, White **PW-***
- Pendant, Black..... **PB-***

*Custom pendant length for dome and pyramid trims available, consult factory (12", 24", 36" etc).



DIMENSIONS

Dimensions are approximate and subject to change.



ORDERING INFORMATION

Example: 8 SPLED A RW Z CLCR

--	--	--	--	--	--	--

Panel Size	Series	Unit Color	Panel Type	Trim	Directional Chevron	Options
8 = 8-inch Letters Blank = 6-inch Letters	SLED = AC Only SPLED = Self-Powered	W = White A = Brushed Aluminum B = Black DB= Bronze PB= Polished Brass CH= Chrome	*RC = Red/Clear RM = Red/Mirror RW = Red/White * Single face only	D = Dome P = Pyramid Z = Flat Trim	Blank = Single Face, No Chevron 2 = Double Face, No Chevron CR = Chevron Right CL = Chevron Left CLCR = Double Face, Single Chevron 2DC = Double Face, Double Chevron 1DC = Single Face, Double Chevron	See Options