

Lighting the way to safety since 1953



*Lightalarms*

[www.lightalarms.com](http://www.lightalarms.com)

**CAMRAY™**

illuminating the Dark  
Decorating the Day

ADAcompliant



**id**  
improved  
diagnostics



Camray™ Series is the newest addition to the Lightalarms Architectural offering. With this self-powered battery or remote fixture, we are bridging the gap between function and design.

Camray™ series is appropriate for both indoor and outdoor applications. Its durable body and UV resistant lens can withstand the wear and tear of Mother Nature, while its slim lines make it an aesthetically pleasing architectural fixture for interior applications.

# FEATURES

The Camray™ Series is multi-functional and is offered in a variety of configurations for indoor and outdoor applications. All models have dual voltage input (120/227 VAC)

## **CAM Remote head:**

Ideal for wet and cold locations.

UL listed for operating temperature range:  $-40^{\circ}\text{C}$  to  $+60^{\circ}\text{C}$  ( $-40^{\circ}\text{F}$  to  $+140^{\circ}\text{F}$ ).

## **CAML Regular interior package\*:**

Cost efficient solution equipped with Lead-Calcium battery.

UL listed for operating temperature range:  $+20^{\circ}\text{C}$  to  $+30^{\circ}\text{C}$  ( $+68^{\circ}\text{F}$  to  $+86^{\circ}\text{F}$ ).

## **CAMN Exterior package\*:**

Perfect solution for cold and wet exterior applications, equipped with NiMH\*\* battery.

UL listed for operating temperature range:  $-20^{\circ}\text{C}$  to  $+40^{\circ}\text{C}$  ( $-4^{\circ}\text{F}$  to  $+104^{\circ}\text{F}$ )

## **CAMN2 High output package:**

Ideal for applications where the photometrical performance of the 10W Xenon lamp is required. Equipped with NiMH\*\* battery.

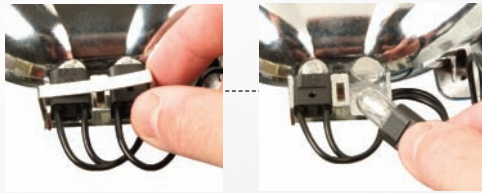
UL listed for operating temperature range:  $+20^{\circ}\text{C}$  to  $+30^{\circ}\text{C}$  ( $+68^{\circ}\text{F}$  to  $+86^{\circ}\text{F}$ ).

\*CAML & CAMN packages available with 6W lamps only.

\*\*Nickel Metal Hydride: State-of-the art battery technology; lead-free and cadmium-free.



**Fast & easy installation**  
 The battery, reflector & electronics are all attached to the front cover and the connection is done using an AC quick connect plug.



**Easy to replace Xenon lamps**  
 Unlike quartz halogen lamps, the Xenon lamps can be easily installed using your fingers.

**Patent pending vacuum metallized die cast reflector**

The multiple conical section reflector was engineered to create a well defined path of light that will guide occupants to safety in case of an emergency.



**Black**

**Dark Bronze**

**Platinum Grey**

**Off White**

Available in four highly durable textured polyester powder coat finishes.

Note: Due to limitations in the painting process, the colors shown may differ slightly from the actual paint color.

# Photometrics

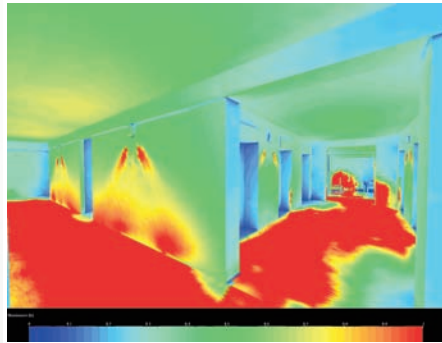
Photometric data based on minimum 80-50-20 reflectance values.

3D image showing installation of four Camray units in an interior application under:

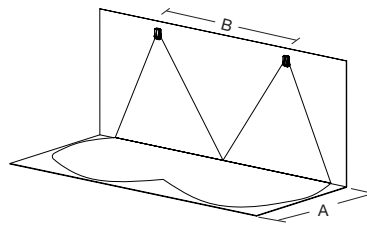
Normal lighting conditions.



Emergency lighting conditions.



3D light level colored scale image showing egress illumination pattern generated by four Camray™ units.



Lamp type	Mounting height	Centre-to-Centre	
		A= 3'	A= 6'
2 x 6W	7.5'	B= 28'	B= 19'
	8.5'	B= 25'	B= 18'
2 x 10W	7.5'	B= 30'	B= 28'
	8.5'	B= 34'	B= 30'

Note: Photometric results shown are based on a simulation using the AGI32 software with a 1 foot-candle average and 0.1 foot-candle minimum with a 40:1 maximum ratio. Lightalrms assumes no responsibility for local requirements or specific project variables. This is a guideline to be used as a design aid, not a guarantee of any code compliances.

## Ordering Information

Example: **CAMN /LX6 -OW T1**

### Battery Unit

Series	Lamp Wattage	Color	Options
<b>CAML</b> = 6V-12W, lead-Calcium battery +20°C to +30°C (+68°F to + 86 °F) std charger. Only available indoor in 6V-6W lamps  <b>CAMN</b> = 6V - 12W, NiMH battery -20°C to +40°C (-4°F to +104°F) Only available outdoors in 6V-6W lamps standard with IDNA*  <b>CAMN2</b> = 6V - 20W, NiMH battery +20°C to +30°C (+68°F to +86°F) Only available indoors with 6V 6W or 6V-10W standard with IDNA*  <small>* IDNA: improved diagnostic non-audible, will self-test the unit for 30 seconds every 30 days, 30 minutes every 60days and 90 minutes annually.</small>	<b>/LX6</b> = 6V 6W Xenon lamps <b>/LX10</b> = 6V 10W* Xenon lamps  <small>*Only available in CAMN2.</small>	<b>-OW</b> = Off white <b>-B</b> = Black <b>-DB</b> = Dark bronze <b>-PG</b> = Platinum grey	<b>T1</b> = 5 min time delay <b>T2</b> = 10 min time delay <b>T3</b> = 15 min time delay-Standard  <small>Note: time-delay available only with IDNA</small>  <b>Limited Warranty</b> LD-CA battery 3 years NiMH battery 5 years

### Remote Unit

Example: **CAM /LX6 -OW 6**

Series	Lamp Wattage	Color	Options
<b>CAM</b> = remote fixture -40°C to +60°C (-40°F to + 140°F)	<b>LX6</b> = 6W, Xenon lamps <b>LX10</b> = 10W, Xenon lamps	<b>-OW</b> = Off white <b>-B</b> = Black <b>-DB</b> = Dark bronze <b>-PG</b> = Platinum grey  <small>Other colors available at a premium. Consult the factory</small>	<b>6</b> = 6V <b>12</b> = 12V