

CAMRAY

Illuminating the Dark
Decorating the Day

*Now with white LED
normally-on option*



Lighting the way to safety since 1953



www.lightalarms.com

ADAcompliant





FEATURES

The **Camray** Series is multi-functional and is offered in a variety of configurations for indoor and outdoor applications. All models have dual input voltage (120/277 VAC)

CAM Remote head:

Ideal for wet and cold locations.
Operating temperature range: -40°C to $+60^{\circ}\text{C}$
(-40°F to $+140^{\circ}\text{F}$).

CAML Standard interior package*:

Cost efficient solution equipped with Lead-Calcium battery.
UL listed for operating temperature range: $+20^{\circ}\text{C}$ to $+30^{\circ}\text{C}$
($+68^{\circ}\text{F}$ to $+86^{\circ}\text{F}$).

Pulse type battery charger

CAMN Exterior package*:

Perfect solution for cold and wet exterior applications, equipped with NiMH** battery.
UL listed for operating temperature range: -20°C to $+40^{\circ}\text{C}$
(-4°F to $+104^{\circ}\text{F}$)

Improved diagnostics (non-audible).

CAMN2 High output package:

Ideal for applications where the photometrical performance of the 10W Xenon lamp is required. Equipped with NiMH** battery.

Improved diagnostics (non-audible).

UL listed for operating temperature range: $+20^{\circ}\text{C}$ to $+30^{\circ}\text{C}$
($+68^{\circ}\text{F}$ to $+86^{\circ}\text{F}$).

*CAML & CAMN packages available with 6W lamps only.

**Nickel Metal Hydride: State-of-the art battery technology; lead-free and cadmium-free.

White LED - Accent Light Camray with dual-mode illumination (optional)

• **General**

The dual-mode illumination feature enables the Camray to provide lighting not only during power outages, but also in normal conditions. This is achieved with a secondary light source, a long-life, 5-watt power LED lamp dedicated to normal lighting.

When equipped with this feature, the equipment includes two independent circuits, electrically isolated from each other: a standard input for emergency lighting and a secondary input for normal lighting. The secondary input can be connected to a regular AC line that may include an electric switch. The dual-mode illumination option is available with any model of Camray unit:

= Battery-operated (self-powered): Lead-Calcium (6V 12W), NiMH (6V20W) and NiMH extreme temperatures (6V 12W)

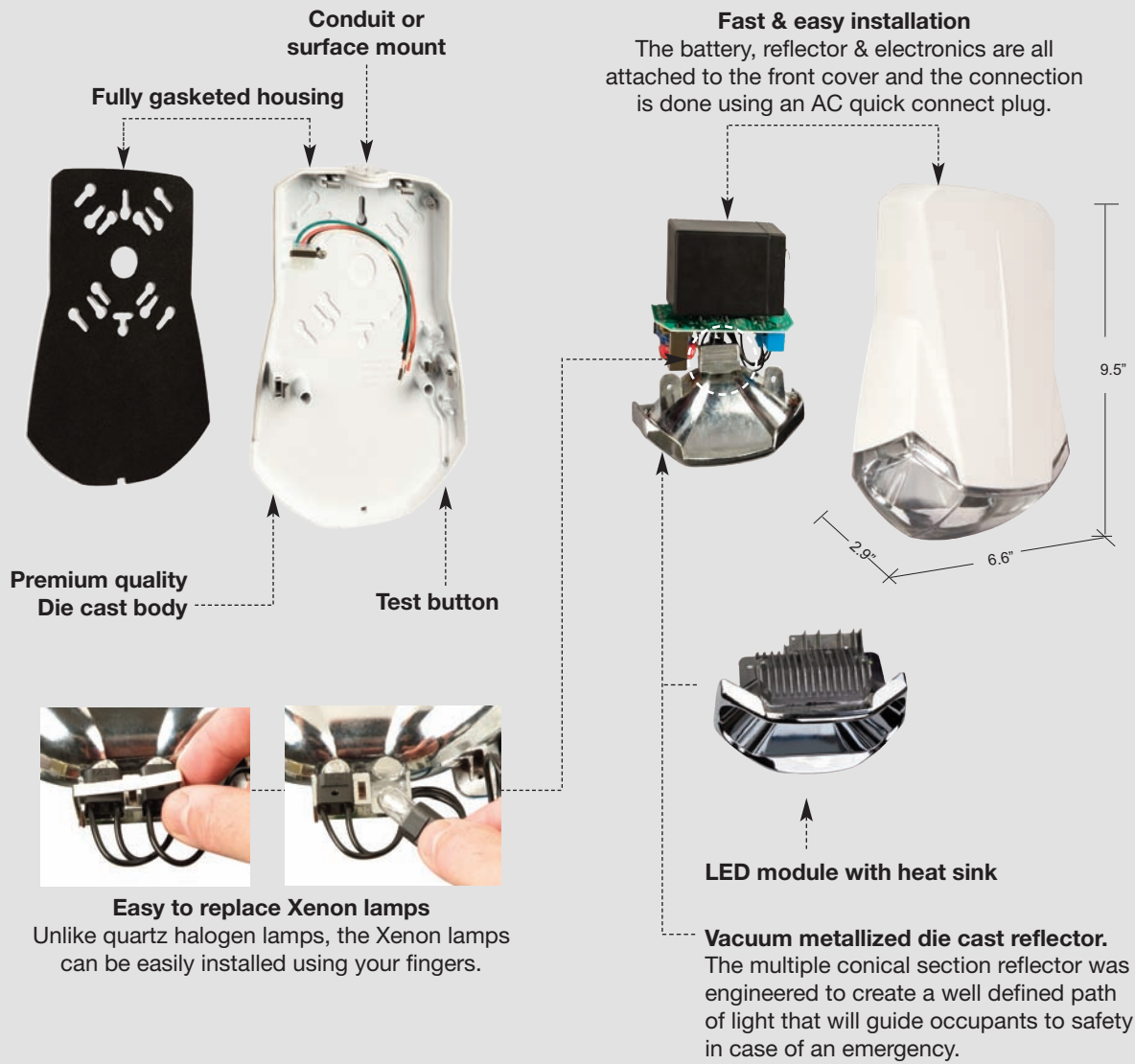
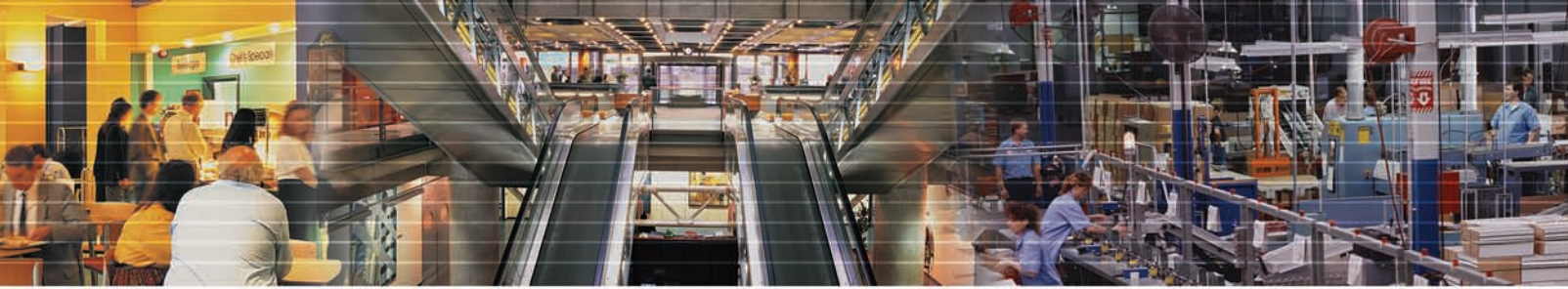
= DC-remote: 6Vdc or 12Vdc; 2 x 6W or 2 x 10W Xenon lamps

• **Electrical**

The Camray LED lamp for normal lighting utilizes one five-watt white LED supplied with a simple and robust ballast circuitry.

= AC input: dual voltage 120/277Vac, 0.04A, 5W

= LED lamp operational life: 50,000 hours (till 70% of initial light level)

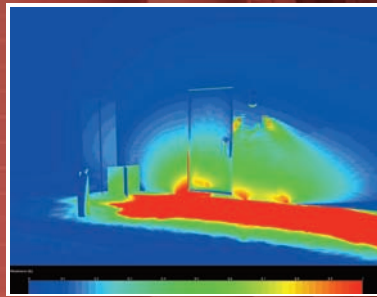


Available in four highly durable textured polyester powder coat finishes.
Note: Due to limitations in the painting process, the colors shown may differ slightly from the actual paint color.

Photometrics

Photometric data based on minimum 80-50-20 reflectance values.

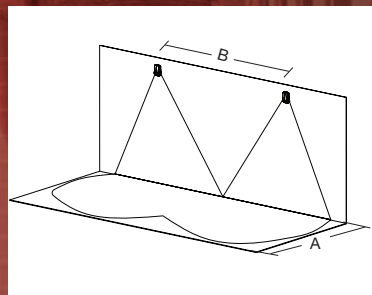
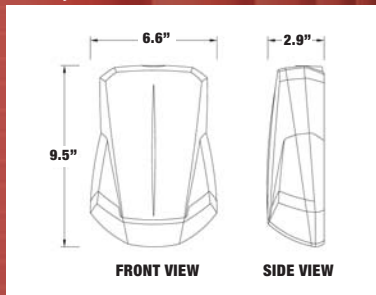
3D image showing installation of four Camray units in an interior application under:



3D light level colored scale image showing egress illumination pattern generated by four Camray units.



Emergency lighting conditions.



Lamp type	Mounting height	Center-to-Center	
		A= 3'	A= 6'
2 x 6W	7.5'	B= 28'	B= 19'
	8.5'	B= 25'	B= 18'
2 x 10W	7.5'	B= 30'	B= 28'
	8.5'	B= 34'	B= 30'

Note: Photometric results shown are based on a simulation using the AGI32 software with a 1 foot-candle average and 0.1 foot-candle minimum with a 40:1 maximum ratio. Lightalarms assumes no responsibility for local requirements or specific project variables. This is a guideline to be used as a design aid, not a guarantee of any code compliances.

Ordering Information

Example: CAMN /LX6 -OW T1

Battery Unit

Series	Lamp Wattage*	Color	Options
CAML= 6V - 12W, lead calcium (+20°C to +30°C) Pulse Type charger	/LX6= Xenon 6V 6W /LX10= 6V 10W**	-OW= off white -B= black -DB= dark bronze -PG= platinum gray	-T1= 5 min time delay -T2= 10 min time delay -T3= 15 min time delay -2= dual-mode lighting
CAMN= 6V - 12W, NiMH (-20°C to +40°C) comes with improved diagnostics non-audible (IDNA)			
CAMN2= 6V - 20W, NiMH (+20°C to +30°C) comes with improved diagnostics non-audible (IDNA)			Note: time-delay available only with IDNA, CAMN and CAMN2 units
		Other colors available at a premium. Please consult your sales representative.	Limited Warranty LD-CA battery 3 years NiMH battery 5 years

Remote Unit

Example: CAM /LX6 -OW 6

Series	Lamp Wattage	Color	Voltage	Options
CAM= remote fixture (-40°C to +60°C)*	/LX6= 6W /LX10= 10W	-OW= off white -B= black -DB= dark bronze -PG= platinum gray	6= 6V 12= 12V	-2= dual-mode lighting
Outdoor remote *Option Dual-Mode Lighting: -40°C to +40°C	Xenon wedge base T3-1/4	Other colors available at a premium. Please consult your sales representative.		