



# AM Series

## Fluorescent Power Packs

### Sealed Maintenance-Free Nickel-Cadmium Battery

#### UL Listed

The **AM Series** Fluorescent power packs are a cost-efficient solution for conversion of new or existing fluorescent fixtures into emergency lighting units. This series are ideally suited for commercial applications.

## FEATURES

### Reliability

The **AM Series** has a three to five-year full warranty (Please see chart below)

### Unit Data

The **AM Series** components are housed in a compact ballast-size case. Installation is simple and cost-efficient. Unit mounts easily inside or on top of fixture using wire end caps (if necessary). Can be wired to operate with switched, un-switched or normally off fixtures without affecting normal operation. Use with Circline, U-shaped and energy-saving lamps. For VH0, SH0 and Power Groove® lamps, use the AM7 or AM12 models. Compatible with standard, energy-saving, dimming and electronic AC ballasts.\*Power Groove is a registered trademark of GE.

### Charger

- Fully automatic solid state charger.
- Automatic transfer relay energizes lamp instantaneously upon failure of normal AC supply.
- Low voltage disconnect prevents overdischarge of battery.
- External test switch and pilot light.

### Power Requirements

Dual Voltage 120/277Vac, 60Hz, 0.3/0.15 Amp

## OPTIONS

(Add Suffix to Model No.)

	<b>Suffix</b>
Damp Location Listing .....	<b>-D</b>
NEXUS® wired .....	<b>NEX</b>
NEXUS® wireless .....	<b>NEXRF</b>

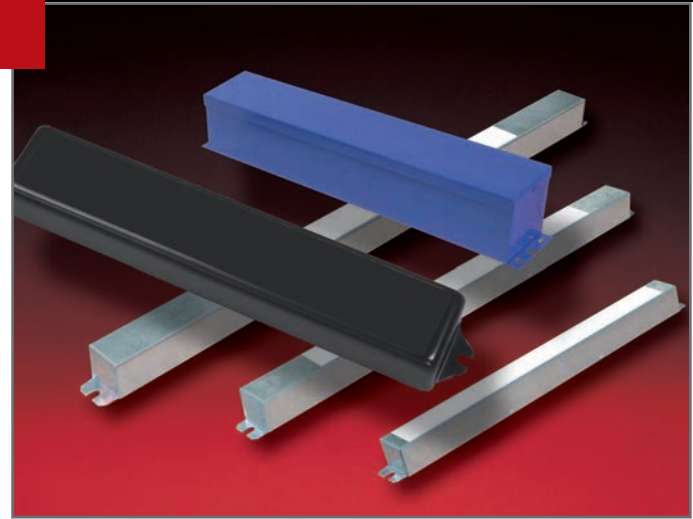
## ACCESSORIES

(Order as a separate item)

Remote Test Switch (Metal faceplate).....	<b>PSW</b>
Remote Test Switch (Plastic faceplate).....	<b>PSW1</b>
Wire end caps for AM32.....	<b>EC6</b>
Wire end caps for AM540 .....	<b>EC54</b>

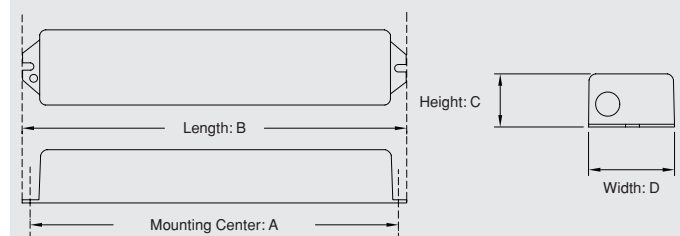
## UNIT SELECTION CHART

Model #	Lamp Operated in Emergency Mode (see new ballast reference chart)	Emergency Illumination Time	Lumens	Wire End Caps	Warranty
AM7	1 lamp 2'-8" (20W-215W) or 2 lamps 2'-4" (20W-40W)	90min.	700	Included	3 year full
AM11	1 compact fluorescent lamp (7, 9 or 13W)	90min.	650	Not required	3 year full
AM12	1 lamp 2'-8" (20W-215W) or 2 lamps 2'-4" (20W-40W)	90min.	1300	Included	5 year full
AM18	1 compact fluorescent lamp (18W & 26W)	90min.	650	Not required	3 year full
AM20	1 compact fluorescent lamp or 2 compact fluorescent lamps (10W-42W)	90min.	650	Not required	3 year full
AM23	2 lamps 2'-4"	90min.	1400	Included	3 year full
AM32-L	1 lamp 2'-4" (20W-40W)	90min.	550	Optional Order #EC6	3 year full
AM80-D	Most 2'-8" single, bi-pin T8 + T12, long compact, HO + HVO fluorescent lamps diagnostic	90min.	1300	Not required	5 year full
AM540	1 lamp 2'-4" (40W-50W) Most 2'-4" T5 or T8 and 40-55 watts 4 pin compact fluorescent	90min.	1300	Optional order #EC54	3 year full



## DIMENSIONS

Dimensions are approximate and subject to change.



Model	Dimensions (inches)			
	a	b	c	d
AM7	9"	9-5/8"	1-1/2"	2-3/8"
AM11	8-7/8"	9-1/2"	1-1/2"	2-3/8"
AM12	12-1/2"	13-1/8"	1-1/2"	2-1/4"
AM18	11-1/2"	12"	1-1/2"	2-3/4"
AM20	9"	9-1/2"	1-1/2"	2-3/8"
AM23	12-3/4"	13-1/8"	1-1/2"	2-3/8"
AM32-L	9"	9-5/8"	1-1/2"	2-3/8"
AM80-D	12-3/4"	13-1/8"	1-1/2"	2-3/8"
AM540	21"	21-1/2"	1-3/16"	1-3/16"

## ORDERING FORMAT

AM80	-D
<b>Series</b>	<b>Option Suffix</b>