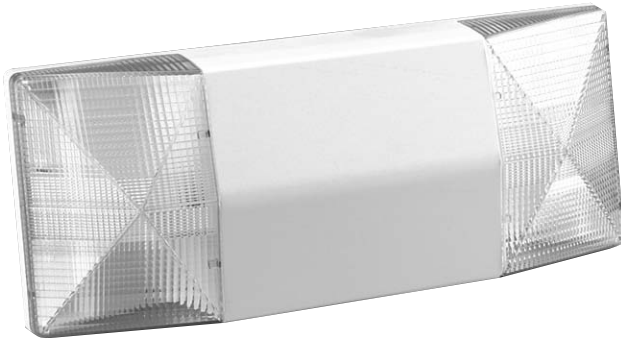




MODEL IC-2

TYPE: _____
 CATALOGUE #: _____
 NOTES: _____



**Lightalarms IC-2...
 Combining Great
 Looks, Performance,
 and Economy Into
 One Ultra-Slim,
 Easy-To-Install
 Emergency Light.**



Application Aesthetically attractive, economical unit ideal for commercial or institutional facilities. Unit offers easy installation on either wall or ceiling, & reliable performance in a low-profile, contemporary design.

Features

- **CONSTRUCTION:** Injection molded from high impact, scratch and corrosion resistant thermoplastic in an architecturally attractive "mist white" color.
- **QUICK, LABOR SAVING INSTALLATION:** Simply wire the mounting plate to the building AC and secure. Then, using the AC quick connect plug, snap the housing onto the mounting plate, and the unit is ready to be powered.
- **ELECTRONICS:**
 - Dual-voltage transformer.
 - Constant voltage, battery current limited charger.
 - High reliability, automatic, instantaneous transfer.
 - Low voltage disconnect prevents damage to battery by over discharging.
 - Labor-saving AC line latch prevents battery discharge during installation to a non-energized circuit.
 - Brownout protection activates unit when AC power dips so low as to dim or extinguish normal area lighting.
 - Minimal components for improved reliability.

- **INSTRUMENTATION:**
 - Visual charge monitor LED indicates AC is present and battery is on charge.
 - Integrated momentary test switch allows for quick operational check of entire system.
- **POWER REQUIREMENTS:**
 120/277 Volt AC.

Battery

6 volt, maintenance free sealed Lead Calcium

Lamp Heads

Standard with two 5.4-watt, high intensity wedge base incandescent lamps.

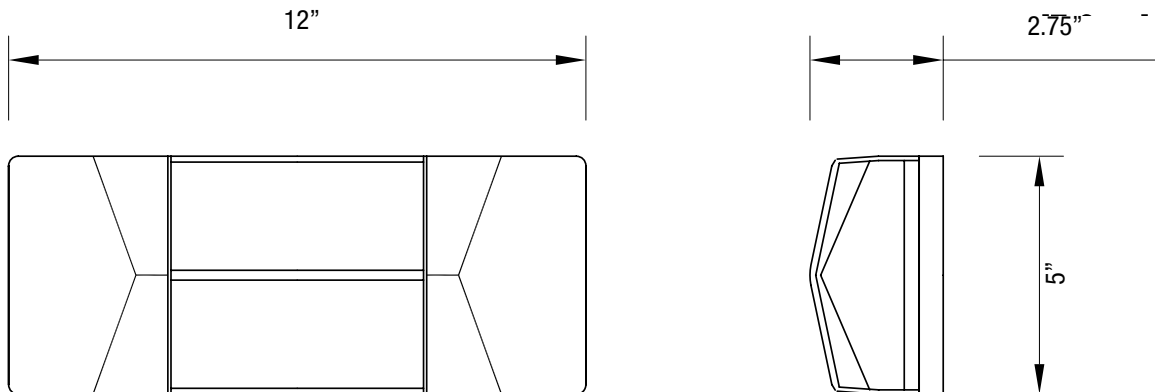
Unit Selection Chart

Volts	Model No.	Capacity in Watts to 87 1/2 % of Nominal Battery Voltage	
		1 1/2 Hrs.	2 Hrs.
6	IC-2	12	8

Accessories

(Order as separate item) Model GuardWG13-L

Specifications For Model IC-2



GENERAL: The contractor shall furnish and install 6V emergency lighting units as indicated on all plans. Input power shall be 120/277 volt 60 Hz.

HOUSING: The battery and all components shall be housed in a compact case injection molded from high impact "mist white" thermoplastic material.

LENSES/LAMPS: The Prismatic lenses shall be constructed of thermoplastic material. The lamps shall be high intensity, all glass wedge base.

BATTERY: Unit shall contain a 6V sealed, maintenance-free Lead Calcium battery. To prevent loss of electrolyte through gassing, the battery shall operate by the principal of electrolyte recombination. Capacity shall be as shown in Unit Selection Chart.

TRANSFER: A high reliability transfer shall automatically and instantaneously connect the lamp load to the battery upon failure of the AC power supply, and shall disconnect the lamps when normal power is restored.

CHARGER ASSEMBLY: An automatic, battery charger shall be provided. The charger shall be current limited and capable of recharging the battery in accordance with UL924.

A low voltage disconnect shall be provided to shut off the lamp load and circuitry when battery voltage decreases below 87½% of rated voltage to protect battery from possible damage due to deep discharge. **Brownout circuit** shall be provided which activates emergency mode when AC power dips below 80-85% of nominal voltage. **AC line latch** circuit shall be provided which prevents battery discharge during installation to a non-energized circuit.

CONTROLS: Charge monitor LED shall be provided to indicate the presence of AC power to the unit and the battery is on charge.

WARRANTY: The entire unit (less lamps) shall carry a three(3) year full warranty against defective parts and improper workmanship under normal operating conditions. The battery shall be warranted for an additional three (3) years on a pro-rata basis.

MANUFACTURER:
Unit shall be Lightalarms Model IC-2

Ordering Information

Example: IC-2

Series
IC-2= series



Thomas & Betts