

Lightalarms

NYC Offering
Lights the way to safety



by ABB



Meet demanding North American safety standards with Lightalarms®

With life safety equipment, accept no compromises.

Lightalarms® products are designed, manufactured and tested to extremely high standards in our North American facility. Our complete range of emergency lighting meets specifications for new construction and retrofit projects. We ensure that our products have been tested to meet the requirements of the latest codes:

- NFPA 101 Life Safety Code
- NFPA 70 NEC
- OSHA
- UL
- New York City

Energy-efficient solutions backed by knowledgeable service

The experienced Lightalarms® service team works with you as your partners. You can count on our proven, trusted, innovative solutions, plus reliability and industry expertise.



Table of contents

					
Company profile 2	Nexus® monitoring system 6	High output MR16 LED 8	LED emergency lighting 9	Circuitry 10	Popular options 11
					
Simplicity™ Premium SLED & SPLED Series 12	Simplicity™ Economizer SE, SES & SEN Series 14	Edge-Lit Series 16	Genesis™ GX & GXE Series 18	Severe™ XV & XVE Series 20	Exit & Combo NY LED Series 22
					
Special Wording Panels 23	Phantom™ Series 24	Mini-Phantom™ Series 26	TBR Series 28	RD Series 30	Camray LED Series 32
					
MG & MN Series 34	MG/MN-SP Series 36	PG & P12G Series 38	PQ & P12Q Series 40	PN LED Battery Series 42	Remote Head DR Series 43
					
Remote Head ELF3 Series 44	ELF612D/LED Series 45	ELF650 Series 46	LALDR Series 48	LADL Series 50	LADL 4 Pin Series 51
					
Low Capacity Mini Inverter Series 52	Mini Inverter Series 54	1000W Mini Inverter Series 56	Wire guards 58		

Depend on Lightalarms® for safety expertise

The experts at our state-of-the-art North American manufacturing center are at your service. The Lightalarms® Global Emergency Lighting Research & Innovation Center in Canada is part of the ABB Group, a pioneering technology leader.

Since 2001, the Lightalarms® manufacturing facility has been ISO 1400 & OHSAS 18001 compliant.

Highly skilled emergency lighting specialists

By partnering with Lightalarms®, you have access to our team of specialists with proven expertise in the emergency lighting industry. Our mechanical, electrical and software engineers and product designers work together under one roof. The team synergy and collaboration at our manufacturing center gives us unparalleled capabilities in design, innovation, quality, final assembly, testing, and service.

Long-term reliability

Lightalarms® products are built to last, with quality, safety, reliability, and ease of installation built into each product from the earliest design stage. We use specialized quality inspection capabilities to perform functional testing on Lightalarms® products. By meeting high internal quality and performance standards at every step from design to production to order fulfillment, we ensure excellence.

We are innovators and builders

As part of Thomas & Betts, a member of the ABB Group, our center of excellence benefits from frequent investment in the latest manufacturing technology. Automation is integrated throughout our manufacturing operations, optimizing efficiency to produce thousands of precision final assemblies each day.

Custom, flexible solutions meet your specialized requirements

- Architectural
- Industrial
- Commercial

We have the design expertise and capacity to create solution-based products that meet your needs. Our experts take great pride in developing products that solve challenging problems.

Fast delivery for express service

We keep ready-to-ship stock in warehouses across the U.S. for express service. As a North American manufacturer, we have complete control over lead time, quality, and service. Our manufacturing team of over 150 people is ready to produce exactly what you need without waiting for a large production run or overseas shipment.

Energy-efficient, innovative solutions

The Lightalarms® product design team is at the forefront of new lighting design applications. We've expanded our capabilities to transform your existing lighting into emergency lighting with our newest high-capacity mini inverters. With the low energy requirements of our high-performance LED fixtures you can use fewer units to provide necessary illumination.

We put the power of automation in your hands with our Nexus® emergency lighting management system. From one central location, you can see the status of every unit at a glance.

A partner you can trust

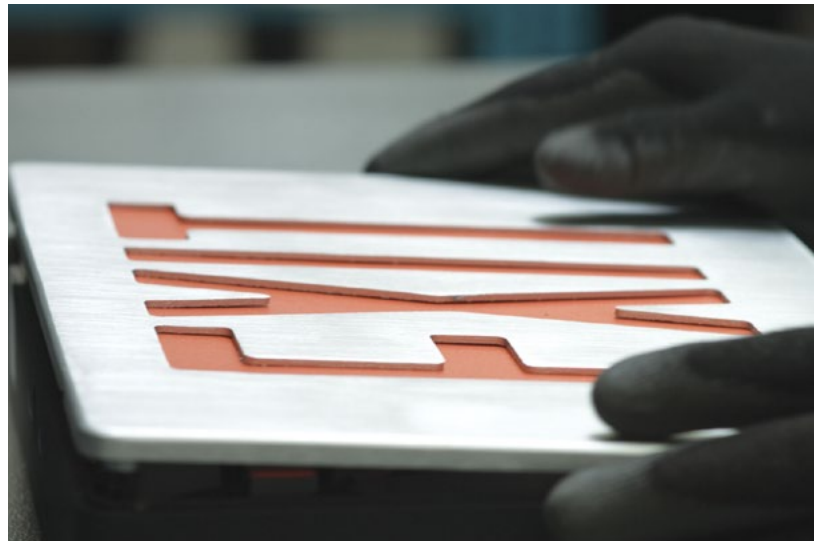
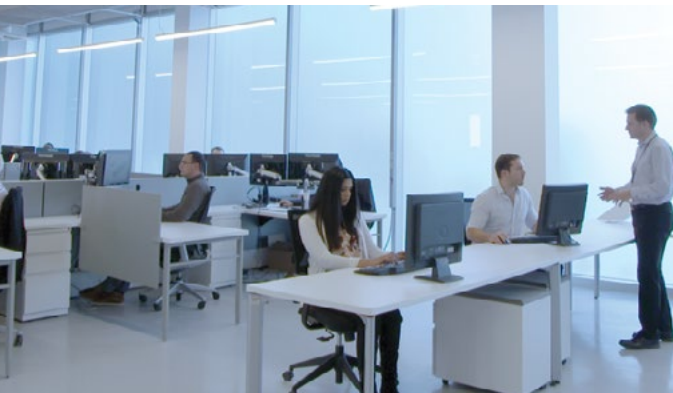
With Lightalarms®, you have

- Proven safety solutions
- A reliable business partner
- Industry experts
- Knowledgeable service
- North American manufacturing
- Peace of mind

To ensure your satisfaction, our knowledgeable North American service team works with you as your emergency lighting partners



Our North American facility is an emergency lighting center of excellence thanks to the commitment, expertise, and creativity of every employee.



The new AOI (automated optical inspection) machine added to our printed circuit board operation in 2012 is one of the first of its kind in use in North America.

Nexus®

Wireless emergency lighting management system

Building & Life Safety Codes oblige building owners/managers to ensure the safe evacuation of a building in the event of an emergency.

Are you prepared for a safety inspection?

In the interest of public safety, building owners/managers must meet the outlined requirements for exit signs and emergency lighting equipment, including the following:

- Conduct a discharge test every month
- Conduct functional tests annually
- Keep a log book of maintenance information

Complying with these requirements can be labor intensive and costly, especially in large buildings where testing every emergency light requires many man-hours. Disrupting the power supply during lengthy inspections can also put public safety at risk.

Manage testing with Nexus® to save time and costs

Nexus® is a real-time monitoring system that manages the status of your entire emergency lighting and Exit Sign system from a central control unit. Nexus® runs diagnostics, performs required monthly and annual functional tests, generates maintenance logs and runs compliance reports.

Nexus®RF

Wireless solutions for safer buildings

Nexus®RF provides building owners and managers with the tools to effectively manage emergency lighting including:

- Conduct all testing remotely without having to disrupt the power supply
- Monitor emergency lighting in a number of facilities from one location
- Plan maintenance activities based on real-time unit status.
- Maintain maintenance logs and generate reports to comply with the Building and Life Safety code
- Manage installations and component removal
- Eliminate emergency lighting testing cost

Nexus®RF configuration:

Nexus®RF is a wireless system which uses a proprietary protocol for radio frequency wireless communication between the units and network infrastructure. This system does not require a server computer, nor does it require data cabling to units. User interaction with Nexus®RF is via a website browser on any computer with access to the network.



Nexus® is a proven system supported by a 5-year warranty, and can contribute to LEED certification and support green building initiatives.

With digital solutions, building owners now can have peace of mind knowing their buildings are safer than ever. All operations can be managed remotely, giving building owners and managers complete control wherever they are, whenever they need it most while preventing any human error in the process.

Nexus®Pro

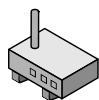
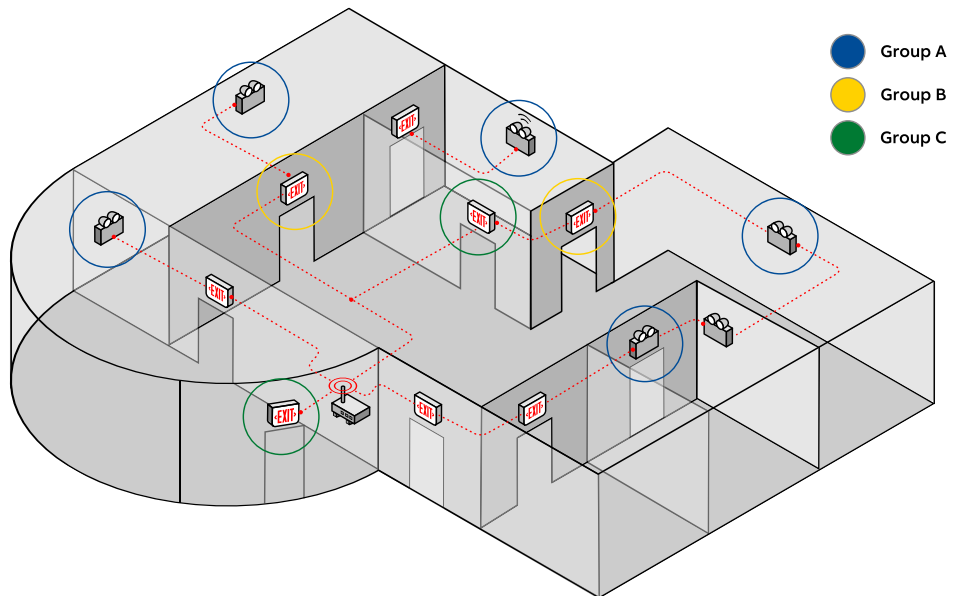
Smarter Technology. Safer Lives

Nexus®Pro is an IoT emergency lighting system designed to enable building owners and managers to easily maintain and test emergency lighting, without the need to visually verify performance or disrupt the power supply.

- Reduces human error while enhancing safety for all building occupants by meeting code and compliance and 24/7 monitoring
- User-friendly app makes emergency lighting management easier and more efficient while reducing your maintenance costs
- ABB Gateway keeps your fixtures secure from development to deployment
- Nexus®Pro uses Bluetooth mesh technology to exchange data between your emergency lighting devices
- Easily go from one building to many. Nexus®Pro gateway can establish a secure wireless connection with up to 200 emergency lighting units
- Available offering for educational, institutional, high security, architectural, healthcare and industrial applications. Nexus®Pro can fit any scale of project to meet different budgets.

The system can bring connected lighting to architectural, commercial, institutional, high-security, healthcare, and industrial locations.

You can simply monitor any of your building installations from anywhere at any time to suit you and concentrate your resources where they are most needed. Nexus®Pro grows with you and puts you in total control.



Area Controller Router



Radio Frequency (mesh network)



Exit Sign



Battery Unit

For Nexus® compatibility please refer to individual product pages for complete details.

High output MR16 LED Emergency lighting

MR16 LED illumination

With the remarkable technology development in the last decade, the light-emitting diode (LED) is becoming the preferred solution in lighting applications. The emergency lighting industry is no exception: today virtually every new product introduced to market includes “white light” light LEDs for emergency illumination. Extremely efficient and long-lasting, LED lamps become the natural alternative to incandescent lamps due to three main advantages:

- Lamp efficacy: 50 - 100 lumen per watt compared to 15 - 30 lumen per watt for the best halogen lamp. Allowing for smaller batteries and units and/or remote capacity
- Operational life: 30,000+ hours, equivalent to a lifetime warranty in emergency lighting.
- Lower lamp temperature: (80 - 120°C) is a huge benefit for lighting in hazardous locations.

MR16 LED lamp benefits

- Reduces total cost of ownership, uses few fixture due to superior illumination, thus reducing installations cost and future maintenance of the entire system.
- UL-recognized components.
- Available for standard battery voltages 6V, 12V and 24V as well as 120V operation.
- Energy-efficient LED MR16 lamp provides equivalent lighting performance to a much higher watt halogen MR16 lamp.
- Reduces required battery capacity by 75%, for battery units and remote heads.
- Small profile, compact white lighting is ideal for architectural applications.
- Typical 30,000 hours of operational life.
- Vibration-resistant LED stands up to industrial environments.
- Ideal for indoor and outdoor use.



200-220 Lumen 4W MR16 LED

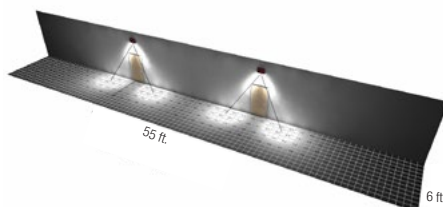
Leading the technology trend, **Lightalarms®** offers a complete series of 4W MR16 LED lamps available for all the standard battery voltages: 6V, 12V, 24V and 120V. With up to 30,000 hours of operational life and a luminous flux of typically 200 to 220 lumens, they are available with most emergency heads designed to hold an MR16 lamp and meet the majority of illumination specifications. For example: one pair of LED emergency heads installed at a height of 7.5ft illuminates a 6ft by 55ft path of egress.

340-Lumen 5W MR16 LED

Keeping pace with technology, in 2012 we introduced a 12V-5W MR16 LED lamp. With a typical luminous flux of 340 lumens, this lamp has the same lighting performance as a 20W high-output halogen MR16. A twin emergency head installed at a height of 7.5ft illuminates 70ft path of egress.

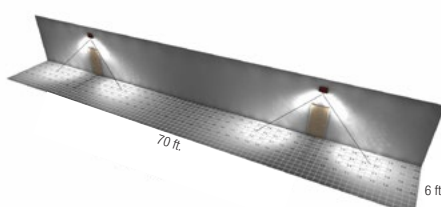
540-590 Lumen 6W MR16 LED

A 6W MR16 LED lamp delivers up to 590 lumens for an average spacing in emergency lighting of 106 feet with an efficacy of 98.3 Lm/w, it is over 6 times the efficacy of a MR16 35W halogen with similar light output. This lamp can deliver the highest linear foot of illumination per watt on a path of egress! (spacing in feet / watt) 8.83ft compare to 1.37ft for a MR16 35W.



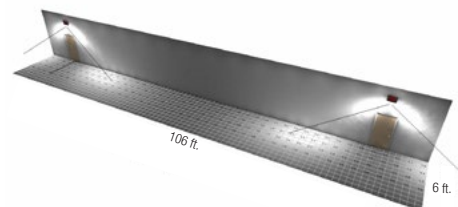
55-ft. Path of egress 2 X 4W MR16 LED

Based on an average of 1 foot candle



70-ft. Path of egress 2 X 5W MR16 LED

Based on an average of 1 foot candle



106-ft. Path of egress 2 X 6W MR16 LED

Based on an average of 1 foot candle

High output MR16 LED

Emergency lighting

Case Study: Fewer MR16 LED units required

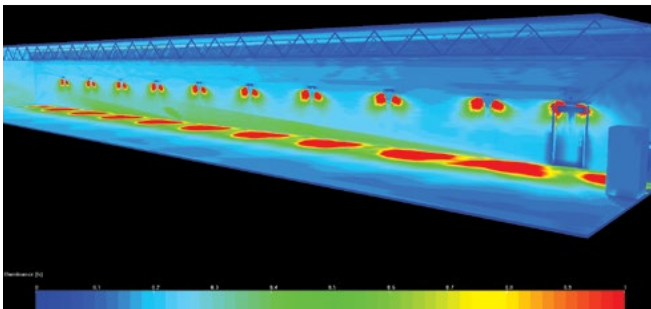
Emergency lighting units with MR16 LED lamps provide the same illumination at floor level using significantly less units.

- Reduced installation costs, less product needed and labor.
- Reduced energy costs, keeping batteries charged at full capacity to be ready to respond to an emergency situation at any time.

- Reduced maintenance and testing cost, less units to maintain and test in the emergency lighting system.
- Reduced lamp replacement cost, LED lamps have a 30,000+ hour lamp life compare to only a few hundred hour typical with incandescent lamps.
- Reduced environmental impact, less product materials, less batteries, less transportation, less packaging, less labor, less waste.

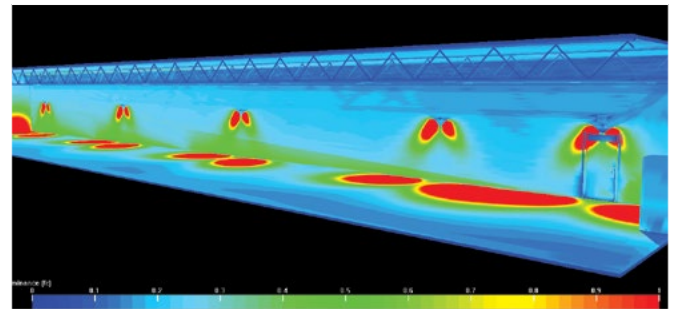
Compare

Where the building code requires an average of 1 foot-candle and a minimum of 0.1 foot-candle at floor level along the path of egress on a 150' x 9' x 9' corridor with an egress door at one end, a 150' x 6' path of egress, and a 7.5' unit mounting height.



Standard wedge-base 9W incandescent lamp

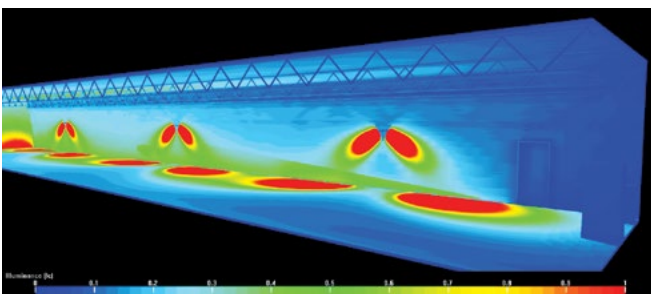
Standard Emergency Lighting Units with 9W wedge-base incandescent lamps requires a total of 10 double-head units or remotes



4W MR16 LED lamps

Same Standard Emergency Lighting Units with 4W MR16 LED lamps requires a total of 5 double-head units or remotes.

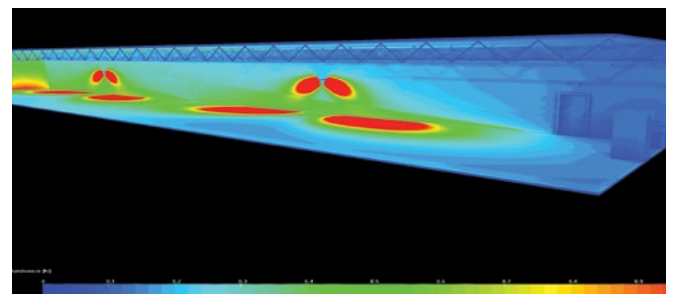
MR 16 LED LAMPS				
Lamp suffix	Voltage	Wattage	Lumens	Replacement number
LD1	6	4	199	580.0097-L
LD7	12	4	220	580.0093-L
LD13	24	4	220	580.0098-L
LD14	24	6	590	580.0100-L
LD25	120	4	204	580.0095-L



5W MR16 LED lamps

Same Standard Emergency Lighting Units with 5W MR16 LED lamps requires a total of 3 double-head units or remotes

MR 16 LED LAMPS				
Lamp suffix	Voltage	Wattage	Lumens	Replacement number
LD9	12	5	340	580.0104-L



6W MR16 LED lamps

Same Standard Emergency Lighting Units with 6W MR16 LED lamps requires a total of 2 double-head units or remotes

MR 16 LED LAMPS				
Lamp suffix	Voltage	Wattage	Lumens	Replacement number
LD10	12	6	540	580.0106-L
LD14	24	6	590	580.0100-L

Circuitry

Emergency lighting

Improved Diagnostics Circuitry

Self-Testing & Monitoring Diagnostic Circuitry

By incorporating diagnostics features with a high-powered 8-bit microcontroller, our **Improved Diagnostics** system ensures unsurpassed reliability in one, totally contained system. In the event of a unit malfunction, the **Improved Diagnostics** system produces an audible warning in the form of an intermittent beep and the LED indicator associated with the fault will illuminate continuously. When the problem is acknowledged by depressing the alarm/silence/test button, the alarm is silenced and the LED indicator changes to a flashing mode until the problem is corrected. Continually monitors system parameters

- Incorporates state-of-the-art microcontroller technology
- D includes audio and visual service alarms
- DNA non-audible version for visual service alarms only
- Self-testing in accordance with NFPA101, Life Safety Code minimum 30 seconds every 30 days, 30 minutes every six months and 90 minutes annually.

Features

Battery Failure

(Red) Illuminates if the battery is shorted or battery voltage drops below preset value. Will also detect incorrect battery (ie. 6VDC vs. 12VDC)

Battery Disconnect

(Red) Illuminates if the battery circuit is open.

Charger Failure

(Red) Illuminates when charger is not functioning properly by monitoring the charger current.

Lamp Failure

(Red) Illuminates when one or more emergency lamps fail. Also monitors remote lamps.

Service Alarm

(Red) Illuminates when a fault is detected that requires a qualified service technician.

AC-On

(Green) Lit when line voltage is present.

Charger On

(Amber) Illuminates when charger is recharging the battery.

Alarm Silence / Manual Test Switch

Button is used to acknowledge and silence audible alarms. Also functions as a manual test switch to simulate a power failure.

Self Testing

Unit tests itself every thirty days for a minimum 30 seconds, thirty minutes on the sixth month and ninety minutes annually.

To Order for Compatible Unit

Add Suffix: -ID (for audible circuit) to model number

Add Suffix: -IDNA (for non-audible circuit) to model number

Improved Diagnostics (ID or IDNA) includes a time delay function, if needed it can be enabled/disabled in the field (15 min) or it can be preset at the factory by including the suffix ID-TD* or IDNA-TD*

Pulse Type Circuitry

Prolongs the life of a battery through pulse charging

Lightalarms® PulseType circuitry utilizes the latest in solid state design to provide a technically advanced charger combined with features and functions that promote long reliable battery life and excellent unit performance.

The design of the PulseType circuit takes into account the long periods of inactivity typical of standby emergency equipment. Batteries are kept at full capacity by a pulse charge that allows the battery to cycle continuously. This greatly reduces the problem of grid corrosion and dramatically increases battery performance.

Lightalarms® computer-tests all active components on the circuit boards during assembly. Critical functions such as brownout, low voltage disconnect, and charge voltage are individually monitored and adjusted at the factory.

Features

120/277V Input

Capability to operate with 120V or 277V input.

Fused Output Circuit for Units with Remote Capacity

Emergency units up to 54W have a single fused output circuit. Units over 54W have two fused output circuits supplied standard.

Dual Diagnostic Indicator Lights

Dual indicators, red and amber continuously monitor the condition of the battery, charge circuit and presence of AC.

Temperature Compensation

- At high ambient temperatures, batteries need less charge voltage to recharge.
- At cold temperatures, batteries require a higher charge to maintain full capacity.
- The PulseType charger automatically adjusts the charge voltage to precisely what the batteries require at a given temperature.

Sealed Relay

- Sealed relay protects against environmental contaminants.
- Low Voltage Battery Disconnect
- The lighting load is disconnected from the battery at 87.5% of nominal battery voltage. This prevents deep discharge damage to the battery.

Brownout Protection

Emergency lamps energized when AC voltage falls to approx. 80% of nominal voltage, the level at which most fluorescent and HID fixtures extinguish.

Battery Lockout

This labor saving feature prevents the battery from discharging when the unit is installed to a non-energized circuit. The battery is electronically locked out until the unit is energized with AC power. Contractors do not have to return to a job site to connect batteries when the building's main power is turned on. They can install the unit and connect the battery in one convenient operation.

Reverse Polarity Protection

A polarized plug is used to connect the battery to the circuit board, thus preventing damage from occurring to the system.

Current Limited Output

Extends battery life by preventing overheating and battery gassing during recharge.

Popular options

Emergency lighting

Lightalarms® Emergency Lighting Units and Exit Signs are available with a range of options that can be added to enhance performance, simplify testing or adapt emergency battery units or exit signs for use in specific environments. Please refer to individual product pages to verify availability of individual options on specific equipment.

Dual Circuit (Exit Signs)

Option provides two AC input circuits to permit 2 separate AC sources to energize the sign.

Add Suffix: -2

Tamper Proof/Vandal Resistant Screws

Tamper proof screws may be used on certain units to avoid unauthorized entry to circuitry or vandalism.

Add Suffix: -VR

Lamp Disconnect Switch

Option will disconnect lamp load when area is not in use during prolonged power failure. The switch may also be used to reactivate emergency power to remote or unit heads.

Add Suffix: -DS-41

Flasher

The flasher option is used within Exit Signs to draw additional attention to the exit discharge area. When there is an emergency situation, the exit legend will illuminate as well as begin to flash thus drawing additional attention to the Exit Sign leading to a exit discharge.

Add Suffix: -FL

Flasher/Buzzer

The flasher/buzzer option is used within Exit Signs to draw additional attention to the exit discharge area. When there is an emergency situation, the exit legend will illuminate as well as begin to flash and admit an audible buzzer thus drawing additional attention to the Exit Sign leading to a exit discharge.

Add Suffix: -FB

Fire Alarm Activated Flasher

Fire Alarm Activated Flasher option is for an Exit Sign that is wired into the Fire Alarm system of a building via 24 volt wire. When the fire alarm is activated the exit legend will flash to draw additional attention to the exit discharge area. This flashing option will only activate when the fire system is activated.

Add Suffix: -FAF

Fire Alarm activated Flasher/Buzzer

Fire Alarm activated Flasher/Buzzer option is for an Exit Sign that is wired into the Fire Alarm system of a building via 24 volt wire. When the fire alarm is activated, the exit legend will flash and the Exit Sign will buzz to draw additional attention to the exit discharge area. This option will only activate when the fire system is activated.

Add Suffix: -FBF

Time Delay

Option is designed to be used in areas where HID type lamps are used for normal lighting. As these lamps require several minutes to re-strike and to produce their nominal lighting output, it is necessary to also hold the emergency lighting on for this period, even after the AC utility has been restored. A time delay unit can be helpful in areas where it is difficult to directly access an emergency lighting unit's test switch. The power to the unit can be briefly switched off and on at the breaker panel, and the maintenance person can then return to the unit and observe a timed emergency operation.

Add Suffix: -T3 (15 minutes) Option provides two AC input circuits to permit 2 separate AC sources to energize the sign.

Add Suffix: -2

Damp Location

Option for environments that are subject to moderate amounts of moisture (humidity), and a temperature range between 10°C (50°F) and 40°C (104°F). Example: partially protected exterior areas such as canopies, stairwells, etc.

Add Suffix: -DL

Improved Diagnostics Circuitry (for exit signs)

Option is designed to continuously monitor the charger assembly, battery and LED assembly current. If a fault is indicated, the external service required indicator will illuminate. The diagnostic/self test will self test for minimum 30 seconds every 30 days, 30 minutes every six months and 90 minutes annually. Meets NFPA 101 Life Safety Code requirements for periodic testing.

Improved Diagnostics (audible) Add Suffix: -ID

Improved Diagnostics (non-audible) Add Suffix: -IDNA

Improved Diagnostics Circuitry (for battery units)

Improved Diagnostics (audible) Add Suffix: -ID

Improved Diagnostics (non-audible) Add Suffix: -IDNA

For complete details refer to page 8.

Simplicity™ Premium SLED & SPLED Series

Premium die-cast aluminum and laser-etched acrylic edge-lit exit sign



Designed for elegant interiors, this premium die-cast aluminum exit sign uses a modular design for mounting flexibility. Clear acrylic legend panel features laser-etched 6" or 8" letters and chevrons; special wording available.

Construction

- Universal mount housing models use (D) dome and (P) pyramid, trim plate, trim ring and canopy made of die-cast aluminum
- Fully recessed only mount housing with (Z) flat trim plate includes steel back-box and hanger bars
- U-shaped clear acrylic legend panel features laser-etched letters and chevrons
- 6 inch EXIT lettering legend, available in red or green
- 8 inch EXIT lettering legend, available in red
- Choice of finishes: white, black or brushed aluminum, dark bronze, polished brass and polished chrome

Mounting

- (D) Dome and (P) pyramid trim models modular design allows for surface, wall, end or ceiling mount, as well as, recessed wall or ceiling applications
- (D) Dome and (P) pyramid trim models include a canopy for surface wall, end or ceiling mount and for recessed wall or ceiling applications a trim ring and hanger bars for installation into t-bar grid

Chevrons



Chevron right (R) single face



Chevron left (L) single face



Single face, double chevron (1D) double face, double chevron (2D)

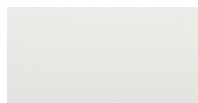


Double face, single chevron (RL) represents each side of a double face panel.

Housing color



Brushed aluminum



White



Black



Dark bronze (painted)



Polished brass



Polished chrome

- (D) Dome and (P) pyramid trim models housing is brushed aluminum with conduit knock-out 1/2", top back and end
- (Z) Flat trim models are for RECESS MOUNTING ONLY and can not be used for surface mount applications
- (Z) Flat trim models include a unfinished steel back-box and hanger bars for installation into ceiling and t-bar grid

Special wording panels

Available. Contact your sales representative with your design requirements

Electronics

- Optional **Improved Diagnostics**
- Optional Nexus® monitoring system
- 120-277 60Hz

Approvals

- UL 924 listed
- Meets NFPA101 (Life Safety Code), NFPA 70 NEC, OSHA illumination standards
- ROHS compliant

Warranty (subject to proper installation and maintenance)

Unit has a five-year limited warranty

Detailed warranty terms located **online at: www.lightalarms.com**



nexus



Trim plates



(D) Dome Trim Plate



(P) Pyramid Trim Plate



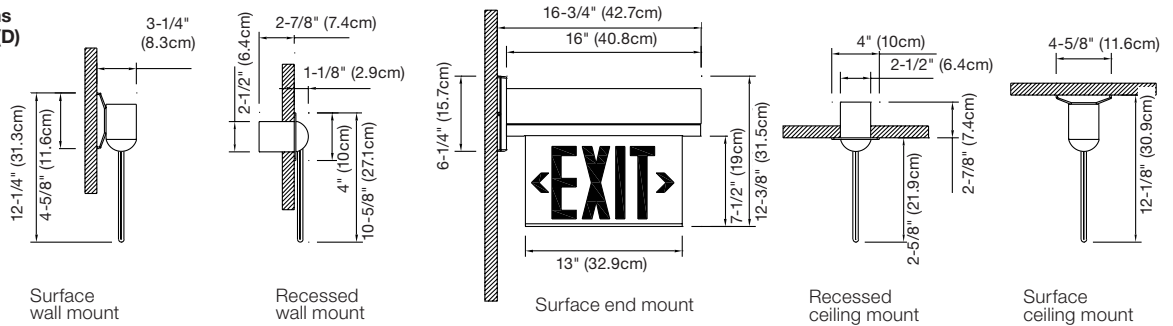
(Z) Flat Trim

(D) Dome Trim Plate and (P) Pyramid Trim Plate photo/text (D) & (P) trims used with universal surface and recess mount housing models

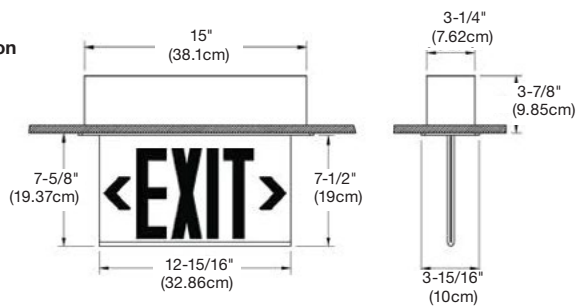
For recess mount applications ONLY (housing is not universal)

Dimensions (Dimensions are approximate and subject to change):

Mounting applications available with dome (D) and pyramid (P) trim plates

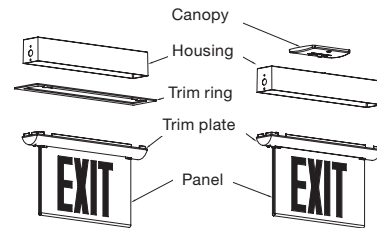


Mounting application available with flat (Z) trim plate - recessed ceiling mount only



When using (D) Dome Trim or (P) pyramid models:

For Recessed mount, use these components



Power consumption chart

Model	AC specs	DC specs
AC-only	120-277VAC, 60Hz (Less than 1.4W)	-
AC/DC	120-277VAC, 60Hz (Less than 1.4W)	6 to 24VDC (Less than 1.4W)
Self-powered	120-277VAC, 60Hz (Less than 2.3W)	Nickel-cadmium battery (Min. 90 minutes)
Self-powered diagnostic	120-277VAC, 60Hz (Less than 2.3W)	Nickel-cadmium battery (Min. 90 minutes)

Accessories (Order as a separate item)

Product code	Description
PW-*	Pendant, white
PB-*	Pendant, black
PA-*	Pendant, gray

* Specify pendant length (12", 24", 36", etc).

Ordering format

Legend	Series	Housing color	Legend color	Panel background color	Trim plate	Chevron	Charger type	Options
Blank = 6" EXIT legend	SLEDN = AC-only	A = Brushed aluminum	R = Red	C = Clear (single face only)	D = Dome ²	Blank = No chevron (single face sign)	Blank = AC only	Blank = No option
8 = 8" EXIT legend	(less than 1.4W)	W = White	G = Green	W = White (single or double face)	P = Pyramid ²	2 = No chevron (double face sign)	ID = Self-test and diagnostic (SP only)	-FAF = Fire alarm flasher (SP only)
	SPLEDN = Self-powered	B = Black		M = Mirror (single or double face)	Z = Flat trim ³	L = Left chevron (on a single face sign)	-NEXRF = Nexus [®] wireless ¹	-FB = Flasher & buzzer (SP only)
		DB = Dark bronze (painted)				R = Right chevron (on a single face sign)	-Y = Two circuits (AC only)	-LP = Panel shipped separately
		PB = Polished brass				RL = Left & right chevron (double face sign, one chevron on each side)		-X = Back box shipped separate
		CH = Polished chrome				1D = Double chevron (on single face)		
						2D = Double chevron (double face sign, two chevrons on each side)		
						UA = (2 Qty) for single & (4 Qty) for doubles universal field stick on chevrons per face		
						2UA = Double face with universal stick on chevrons		

Example: SLEDNARWDLY

¹ Consult your sales representative. For Special Wording, please contact your sales representative.

² Universal housing for Surface or Recessed mount applications

³ Fully Recessed ONLY applications (not to be used for surface mount)

Simplicity™ Economizer SE, SES & SEN Series

Surface or recessed mount edge-lit exit sign



For design-sensitive public spaces, these elegant edge-lit exit signs complement modern décor. Available in AC-only, AC/DC and self-powered models.

In high visibility areas, the Simplicity™ Economizer Series Exit signs provide elegant designer details including a clear acrylic panel, recessed ceiling mount design, and brushed aluminum trim plate.

Construction

- Recessed model steel housing with extruded aluminum trim plate
- Surface mount model extruded aluminum housing
- Panel features a curved contour for maximum illumination and clarity
- 6 inch EXIT lettering legend available in red or green
- 8 inch EXIT lettering legend available in red
- Choice of housing and trim plate finishes, off white or textured aluminum
- Universal field selectable chevrons

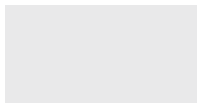
Mounting

- Recessed model: Fully recessed ceiling mount
- Recessed model includes hanger bars for lay-in installation in T-bar grid
- Surface mount model includes canopy for ceiling, wall or end mount

Housing color



Textured aluminum



Off white

Special wording panels

Available. Contact your sales representative with your design requirement

Electronics

120/277 60Hz

Approvals

- UL 924 listed
- Meets NFPA101 (Life Safety Code), NFPA 70 NEC, OSHA illumination standards

Warranty (subject to proper installation and maintenance)

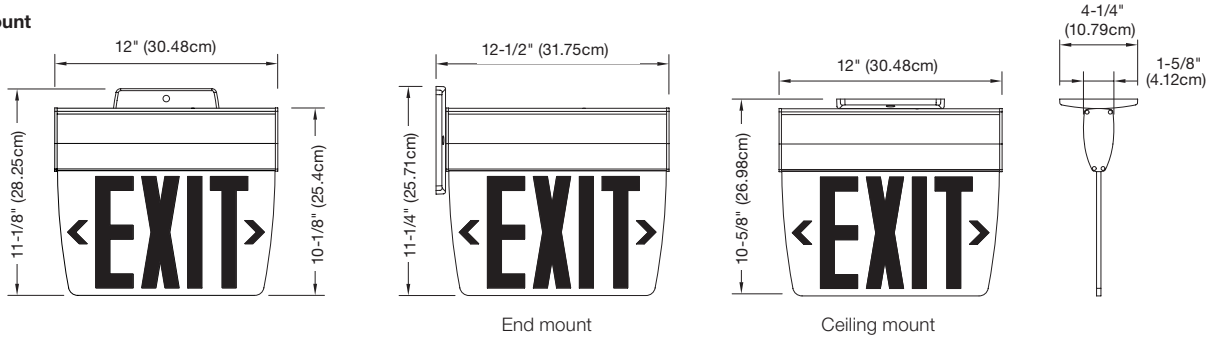
Five-year limited warranty

Detailed warranty terms located **online at: www.lightalarms.com**

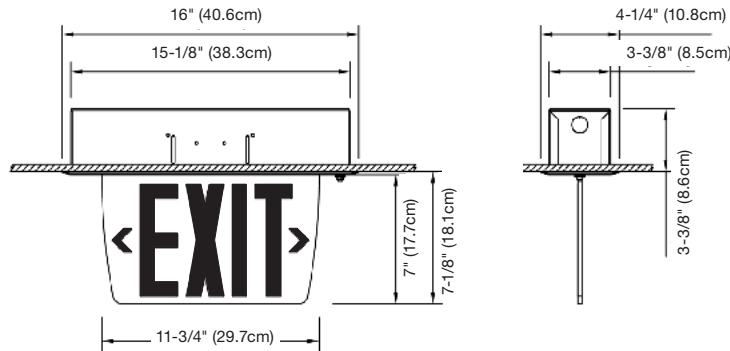


Dimensions (Dimensions are approximate and subject to change):

Surface mount



Recessed ceiling mount only (F) flat trim plate



Power consumption chart

Model	AC specs	DC specs
AC-only	120-277VAC, 50/60Hz (Less than 2W)	-
AC/DC	120-277VAC, 50/60Hz (Less than 2W)	6 to 24VDC (Less than 1.5W)
Self-powered	120-277VAC, 50/60Hz (Less than 3W)	Ni-Cd (Min. 90 mins)

Ordering format

6 inch Series	Trim	Housing color	Legend color	Face
SE= AC-only SES= AC/DC SEN= Self-powered	Blank= Surface mount only F= Recessed mount only (flat trim)	TA= Textured aluminum OW= Off white	RC= Red on clear ¹ RW= Red on white RM= Red on mirror GC= Green on clear ² GM= Green on mirror	1= Single face 2= Double face
Example: SEFOWRC1				

¹Green on white not available.
²Single face only.

8 inch Series	Trim	Housing color	Legend color	Face
8SE = AC-only 8SES = AC/DC 8SEN = Self-powered	Blank= Surface mount	TA= Textured aluminum OW= Off white	RC= Red on clear ³ RW= Red on white RM= Red on mirror	1= Single face 2= Double face

Example: 8SEFOWRC1

³Single face only.

Edge-Lit Series

8" edge-lit exit sign



Ideal for areas with limited space, the Edge-Lit exit sign has a pivoting panel design for universal mounting: surface, recessed or end-mount. High-performance, low power consumption LEDs provide illumination.

Construction

Extruded aluminum housing

- Impact resistant thermoplastic plastic end caps and canopy
- High grade acrylic panel
- 8 inch EXIT lettering legend, available in red

Universal mount model

- Single face acrylic panel with clear background, double face acrylic panel with mirror background
Pivoting panel design allows for recessed surface, wall or ceiling mount installation
- A ratcheting mechanism allows the panel to be set in place from 0° to 180° for wall or sloped ceiling mounting
- Canopy included for surface wall, end or ceiling mount application
- Trim plate, 27 inch adjustable T-bar hangers and a junction box included for recessed application

Finishes

- Satin aluminum housing
- Gray end caps and canopy
- Comes with red on clear for single face and red on mirror for double face panel

Chevrons

- (4) Factory installed translucent chevrons, allowing for easy peel-off removal as required

LEDs

- Red long life light emitting diodes (LED) illumination

Self-diagnostics

- Not available

Special wording panels

- Not available

Approvals

- Listed to UL 924 Standards
- UL Listed for damp location (32°F to 104°F, 0°C to 40°C)
- Meets, NFPA101, (Life Safety Code) NFPA 70 NEC and OSHA illumination Standards

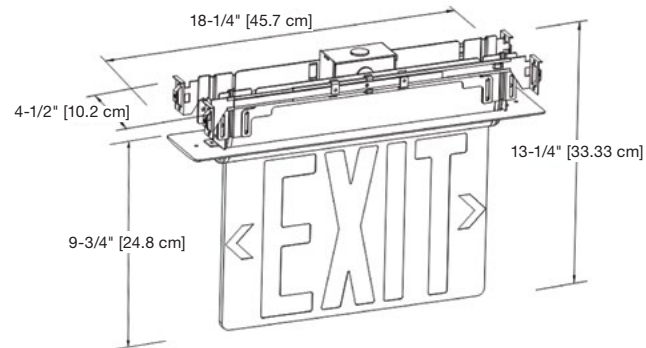
Warranty (subject to proper installation and maintenance)

- Three-year full warranty

Detailed warranty terms located **online at:** www.lightalarms.com



Dimensions (Dimensions are approximate and subject to change):



Power consumption chart

Model	AC specs	DC specs
Red self-powered	120VAC, 60Hz (2.0-2.6W)	Ni-Cd battery (Min. 90 mins)
	277VAC, 60Hz (2.6-3.1W)	Ni-Cd battery (Min. 90 mins)

Ordering format

Legend	Series	Housing color	Legend color	Face
8 = 8" Exit with universal chevrons	UEN = Self-Powered	AG = Brushed aluminum and gray end cap	RCM = Single red on clear Double red on mirror	3 = Universal faces
Example: 8UENAGRCM3				

Genesis™ GX & GXE Series

Die-cast aluminum LED exit sign



For bold visual performance, the die-cast aluminum Exit sign faceplate is available in a range of finishes with a red or green legend.

Construction

- Faceplate, backplate and canopy are made of die-cast aluminum
- 6 inch EXIT lettering legend, available in red or green
- 8 inch EXIT lettering legend, available in red
- Choice of finishes: white, black, brushed aluminum or dark bronze

Mounting

- Surface mount
- Canopy included for end or ceiling mount applications
- Universal J-box mounting

Special wording panel

Available. Contact your sales representative with your design requirements

Electronics

- Standard **Improved Diagnostics** on GXE
- 120-277 60Hz

Approvals

- CSA-US (To UL 924 standards)
- Damp location optional 50°F to 104°F (10°C to 40°C)
- Meets NFPA101 (Life Safety Code), NFPA 70 NEC, OSHA illumination standards

Warranty (subject to proper installation and maintenance)

Five-year limited warranty

Detailed warranty terms located **online at: www.lightalarms.com**



Power consumption chart

Model (6 inch Exit legend)	AC specs	DC specs
AC-only	120 to 347VAC, 50/60Hz (1.25W)	-
AC/DC	120 to 347VAC, 50/60Hz (1.25W)	6 to 48VDC (Less than 1.5W)
Self-powered	120 to 347VAC, 50/60Hz (1.6W)	Ni-Cd battery (Minimum of 90 minutes)
Model (8 inch Exit legend)	AC specs	DC specs
AC-only	120 to 347VAC, 50/60Hz (2.5W)	-
AC/DC	120 to 347VAC, 50/60Hz (2.5W)	6 to 48VDC (Less than 1.6W)
Self-powered	120 to 347VAC, 50/60Hz (2.9W)	Ni-Cd battery (Minimum of 90 minutes)

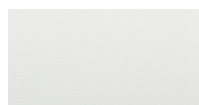
Frame/Face plate color



Brushed aluminum



Black

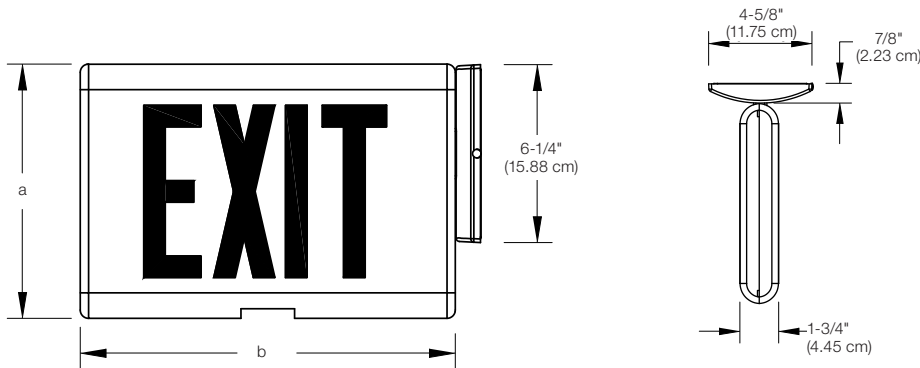


White



Dark bronze (painted)

Dimensions (Dimensions are approximate and subject to change):



Accessories (Order as a separate item)

Description	Product code
Pendant mount white	GPW-*
Pendant mount black	GPB-*
Pendant mount gray	GPA-*
Wire guard (wall mount) (6 in.)	WG13-L
Wire guard (ceiling mount) (6 in.)	WG14-L
Wire guard (end mount) (6 in.)	WG15-L
Vandal shield (wall mount)	VRC
Vandal shield, NEMA-4X (wall mount)	VRC-4X

* Specify pendant length (12", 24", 36", etc).

Housing cabinet

Letters	Dimension A	Dimension B
6" (15.24 cm)	8-7/8" (22.54 cm)	13-1/16" (33.18 cm)
8" (20.32 cm)	10-1/2" (26.67 cm)	15-1/4" (38.74 cm)

Ordering format

No. of faces	Series	Back plate/ Frame color	Legend color	Face plate color	Diagnostic option ¹	Options	Version
Blank = 6" single face	GX = AC/DC Only	A = Brushed aluminum	R = Red	A = Brushed aluminum	Blank = Standard	Blank = No option	-N²
2 = 6" double face	GXE = Self-powered	B = Black	G = Green	B = Black	Improved Diagnostics (non-audible)	-DL = Damp location screws	
8 = 8" single face		W = White		W = White		-VR = Vandal resistant screws	
82 = 8" double face		Optional DB = Dark bronze (painted)		Optional DB = Dark bronze (painted)		-LVR = Vandal resistant polycarbonate lens and screws	
						-Y = Open faceplate and Special wording faceplate	
						-2 = 2 Circuit (120/120 or 277/277, AC-Only)	

Example: GXEARA-N

¹ Available with self-powered GXE exit only
² Include on 6" models

Severe™ XV & XVE Series

NEMA-4X, vandal resistant and harsh environment exit sign



State-of-the-art NEMA-4X rated emergency illumination in a visually appealing package.

The Severe™ XV Series exit sign is a part of the Severe™ family of NEMA-4X rated emergency lighting products. The Severe™ family offers complete emergency lighting solutions for commercial and industrial environments where protection against humidity, dust, water infiltration and the risk of vandalism are specification criteria. These products deliver state-of-the-art illumination in a visually appealing package.

Construction

- Full gasketed NEMA-4X housing
- Frame: polyvinyl chloride enclosure, fully gasketed around the lens, backplate and canopy to prevent water infiltration
- Faceplate: heavy-duty, vandal-resistant polycarbonate
- Backplate: heavy aluminum
- Comes with both Phillips head and tamper-proof screws
- 6 inch EXIT lettering legend, available in red or green
- Field-selectable chevrons
- Choice of finishes: white, black or gray

Mounting

- Surface mount applications
- Ceiling and wall mount are NEMA-4X
- End and pendant mount are not NEMA-4X
- Canopy included for end or ceiling mount applications
- Universal J-box mounting
- ½ inch conduit entry on top and sides

Special Wording Panels

Available. Contact your sales representative with your design requirements

Electronics

- Magnetically operated test switch
- Standard **Improved Diagnostics (non-audible)**
- Optional Nexus® monitoring system
- 120/277 60Hz

Approvals

- UL 924 listed
- UL listed for wet and damp location
50°F to 104°F (10°C to 40°C)
- UL listed for cold weather option-40°F to +104°F
(-40°C to +40°C)
- Meets NFPA101 (Life Safety Code), NFPA 70 NEC, OSHA illumination standards

Warranty (subject to proper installation and maintenance)

Five-year limited warranty

Detailed warranty terms located **online at: www.lightalarms.com**

nexus

NEMA-4X

NSF

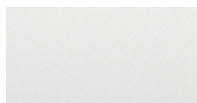
id.
Improved
diagnostics



Housing/Face color



Black



White

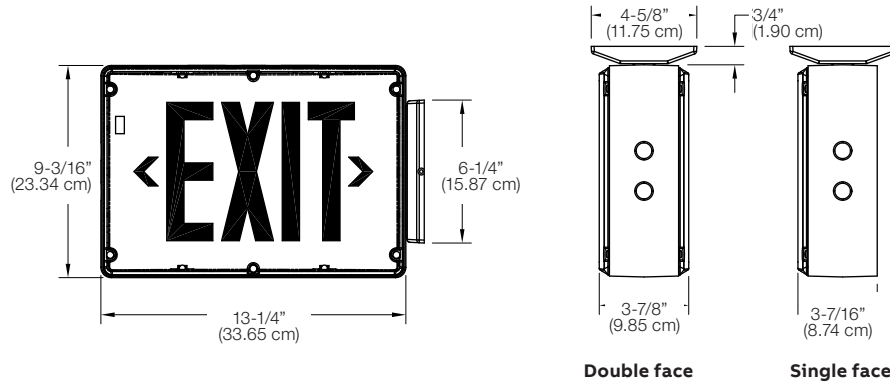


Gray



Aluminum

Dimensions (Dimensions are approximate and subject to change):



Power consumption chart

Model	AC specs	DC specs
AC-only	120-277VAC, 50/60Hz (1.2W)	-
AC/DC	120-277VAC, 50/60Hz (1.2W)	6 to 24VDC (Less than 1.5W)
Self-powered	120-277VAC, 50/60Hz (3.7W)	Ni-Cd battery (Min. 90 minutes)

Accessories (Order as a separate item)

Description	Product code
Convert single face to double face, red (in the field)	DFKR-*
Convert single face to double face, green (in the field)	DFKG-*
Tamper-Proof Bit (extra)	690.0454-L

*Specify white (WT) or black (BK) housing

Ordering format

Housing/ Face color	Series	Faces	Legend color	Diagnostic	Housing	Options
Blank = Black/Black	XV = AC-only	-1= Single face	-R= Red	Blank = AC-Only models	-4X = NEMA-4X housing ²	Blank = No options
BW = Black/White	XVE = Self-powered	-2= Double face	-G= Green	-D = Improved Diagnostics (non-audible, standard) ¹		-2 = Dual Circuit (120/120 or 277/277AC only) ³
BA = Black/Aluminum	Nickel-			-DA = Improved Diagnostics (audible)		-DC = AC/DC 6V to 24VDC ³
GB = Gray/Black	Cadmium			-NEXRF = Nexus [®] wireless ¹ (contact your sales representative)		-CW = Cold weather (Self-powered -4°F to 104°F, -20°C to 40°C) (AC/DC -40°F to 104°F, -40°C to 40°C)
GW = Gray/White	battery					-Y = Open face/special wording
GA = Gray/Aluminum						-CM = Pendant mount
WB = White/Black						
WW = White/White						
WA = White/Aluminum						

Example: BAXVE-1-R-D-4X-CW

¹ Available with Self-Powered models only.
² Wall or ceiling mount only
³ Not available with -NEXRF, Nexus[®] option

Exit & Combo NY LED Series



Self-powered exit and combination LED units with 8" exit legend

Housing

- Heavy duty steel case with white powder-coat finish
- Stencil face has 8" high letters and universal knock out chevrons
- Plastic lamp housing with rated 5VA flame retardant

Mounting

- Exit sign can be ceiling, end or wall mounted
- Combination unit can be wall mounted

Lamp type

- 3 (1.5W) LED lamps, 150 lumens per lamp in combination heads
- LED exit legend illumination

Electronics

- 120V/277V operation standard
- Universal 120/277 VAC transformer required

Long life maintenance-free batteries

- Nickel-cadmium battery

Approvals

- UL 924 standards
- Complies with NEC, Life Safety Code and OSHA
- Suitable for damp location

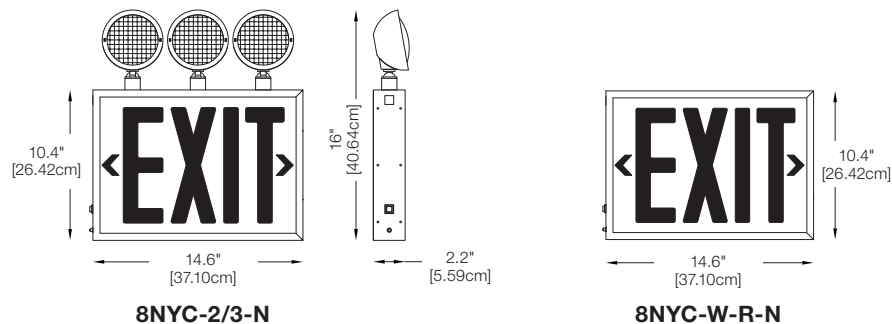
Warranty (subject to proper installation and maintenance)

- Unit has a three year full warranty (excluding lamps and pilot lights)
- Nickel-cadmium battery has a five year full, plus five year pro-rata warranty

Detailed warranty terms located [online at: www.lightalarms.com](http://www.lightalarms.com)



Dimensions (Dimensions are approximate and subject to change):



Ordering format

Series	Wattage
8NYC-W-R-N	8" Exit self-powered, white with red legend
8NYC-2/3-N	8" Combo 2/3 heads, white red legend
Example: 8NYC-2/3-N	

Special wording panels

Customized special wording panels available for use in our exit signs and combination units



Features

- The same sturdy construction and electrical design used in our exit signs and combination units, is used to produce our custom-worded, illuminated signage
- Sign bodies: steel, extruded and die-cast aluminum, weatherproof, flameretardant polycarbonate, high impact thermoplastic, recessed housing
- Custom wording: any style of lettering, any language, any alphabet, any special characters
- Graphics: logos, standard symbols, custom art
- Color choices: sign bodies, message, faceplate panel
- Contact your local Lightalarms® representative to discuss your specific requirements

Custom signage panels are available for use in the following series:

- Simplicity™ Premium Series
- Simplicity™ Economizer Series
- Genesis™ GX, GXE Series

Note: Shown are only a few examples of special wording panels that we have produced. Many more panels are available to meet any customized order.



Phantom™ Series

The unseen solution

12V up to 100w capacities – generator capable



Designed for architectural applications, the Phantom™ Series stays hidden until needed. In normal conditions (stand-by) the emergency light is concealed in the wall or ceiling. In case of power failure, the door of the unit rotates open 180° and exposes the emergency light. When main power returns or at the end of the discharge period, the light turns off and the door rotates closed automatically.

Housing

- Galvanized steel back-box
- Easy access to internal components
- Head assembly door and trim plate powder coated in a white finish
- Finish can be customized on site with paint or wallpaper
- Choice of various 12 volt MR16 LED lamp wattages
- Complete 360° head assembly door rotation
- Slip gear mechanism protects unit and objects against forcible stops

Mounting

- Recessed mount into ceiling or wall with cavities
- Hanger bars included for lay-in installation in T-bar grid
- Can be installed on the wall stud or ceiling beam with simple, U-shape bracket
- Head assembly includes keyhole slot and quick-connect plugs for easy installation

Electronics

- Pulse plus charger
- Low voltage disconnect
- Automatic brownout protection
- Battery lock-out
- Fused output circuit
- Optional: **Improved Diagnostics**
- 120/277 60Hz

Choice of sealed maintenance-free battery

- 12V lead-calcium battery
- 12V nickel-cadmium battery

Approval

- CSA-US (To UL 924 standards)
- New York City Approved

Warranty (subject to proper installation and maintenance)

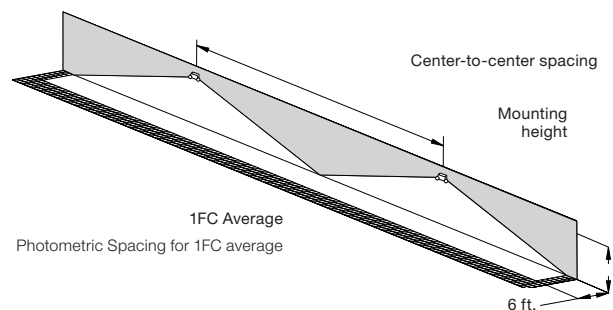
Unit: five-year limited warranty

Detailed warranty terms located **online at: www.lightalarms.com**



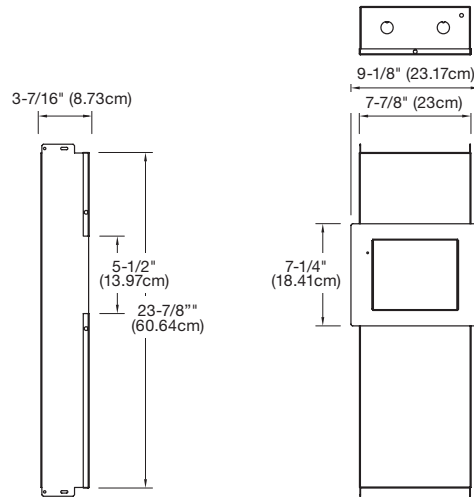
Photometric performance

Lamp	Spacing center-to-center (feet)	
	7 feet mounting height	15 feet mounting height
LD7	49'	39'
LD9	68'	54'
LD10	89'	80'



Dimensions (Dimensions are approximate and subject to change):

Charger and battery compartment:
For use in walls or ceilings with a cavity, not for use in block walls or solid ceilings.



Power consumption chart

Series	Battery	Voltage	DC specs				AC specs				
			Battery capacity (in watts)				Units dual voltage ¹	Current			Power
			90 Mins	2 Hrs	3 Hrs	4 Hrs		Maximum	Stand by	Maximum	Stand by
PHM40	Lead-calcium	12V	40	30	24	12	120VAC 277VAC	0.25A 0.12A	0.10A 0.05A	30W 30W	11W 11W
PHM70	Lead-calcium	12V	70	50	40	24					
PHM100	Lead-calcium	12V	100	70	50	40					
PHN40	Nickel-cadmium	12V	40	30	24	12					
PHN70	Nickel-cadmium	12V	70	50	40	24					
PHN100	Nickel-cadmium	12V	100	70	50	40					

¹Stand-by power consumption is 50% lower for lead-calcium batteries

Accessories (Order as a separate item)

Description	Product code
Remote test switch (metal faceplate)	PSW
Remote test switch (plastic faceplate)	PSW-1

Ordering format

Series	Battery	Capacity	Number of heads	Lamp type	Options
PH=	M= Lead-calcium	40= 12V-40W	-2= Two lamps	MR16 LED	Blank= No options
Battery	N= Nickel-cadmium	70= 12V-70W		(LD7)= 12V-4W	ID= Improved Diagnostics (audible) ¹
unit		100= 12V-100W		(LD9)= 12V-5W	IDNA= Improved Diagnostics (non audible) ¹
				(LD10)= 12V-6W	T3= Time delay (15 minute)
					DL= Damp location ²
					X= Back box shipped separate

Example: PHM100-2LD7

¹-ID & -IDNA include a time delay feature that can be enabled/ disabled in the field or set by the factory by including -ID-TD* or -IDNA-TD*

²-DL option not available with PHN100 unit

Note: For complete 12V MR16 lamp information refer to page 114 Remote Fixture, Phantom™ Series, Lamp Selection Chart

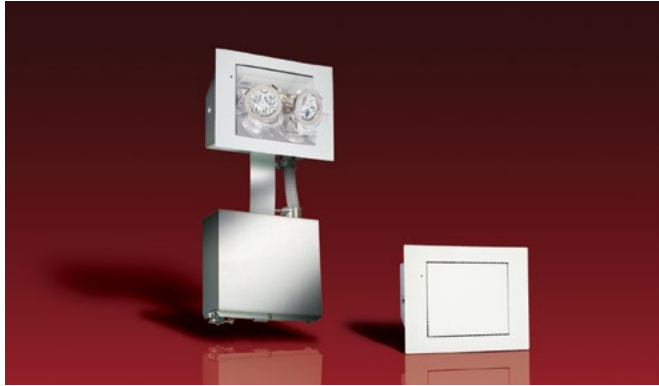
Series	Input voltage	Number of heads	Lamp type	Options
PHG= Generator unit	1= 120VAC, 60Hz	-2= Two lamps	MR16 LED	DL= Damp location
	2= 277VAC, 60Hz		(LD7)= 12V-4W	X= Back box shipped separately
			(LD9)= 12V-5W	
			(LD10)= 12V-6W	

Example: PHG1-2LD7

Note: For complete 12V MR16 lamp information refer to Remote Fixture, Phantom™ Series, Lamp Selection Chart at www.lightalarms.com

Mini-Phantom™ Series

The full retrofit unseen solution
12V-40W capacities – generator capable



Specially designed for retrofit use in a finished wall with cavity; designed for installation into an 8-1/4" by 5-3/4" opening. In normal conditions (stand-by) the Phantom™ series emergency light is concealed in the wall or ceiling. In case of power failure, the door of the unit rotates open 180° and exposes the emergency light. When main power returns or at the end of the discharge period, the light turns off and the door rotates closed automatically.

Housing

- Galvanized steel back-box
- Easy access to internal components
- Head assembly door and trim plate powder coated in a white finish
- Finish can be customized on site with paint or wallpaper
- Choice of various 12 volt MR16 LED lamp wattages
- Complete 360° head assembly door rotation
- Slip gear mechanism protects unit and objects against forcible stops

Mounting

- Recessed wall or ceiling with cavity mount (retrofit into finished wall)
- Designed to install into an 8-1/4" by 5-3/4" opening
- Key-hole slot for ease of installation

Electronics

- Pulse plus charger
- Low voltage disconnect
- Automatic brownout protection
- Battery lock-out
- Fused output circuit
- Optional: **Improved Diagnostics**
- 120/277 60Hz

Choice of sealed maintenance-free battery

- 12V lead-calcium battery
- 12V nickel-cadmium battery

Approval

- CSA-US (To UL 924 standards)
- New York City Approved

Warranty (subject to proper installation and maintenance)

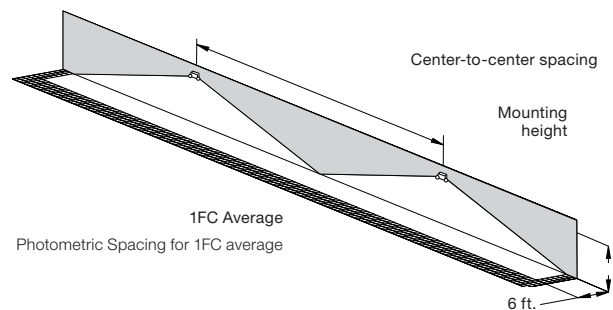
Unit: five-year limited warranty

Detailed warranty terms located **online at: www.lightalarms.com**

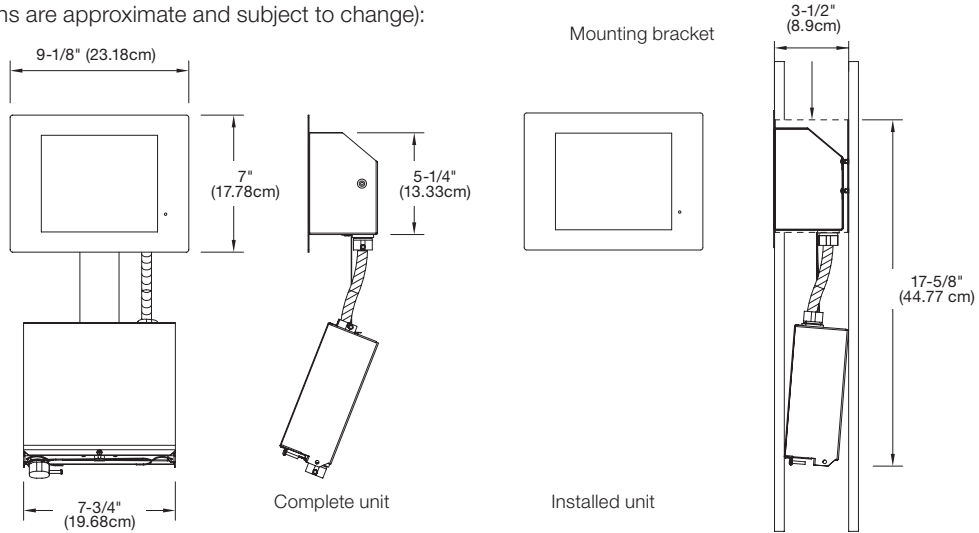


Photometric performance

Lamp	Spacing center-to-center (feet)	
	7 feet mounting height	15 feet mounting height
LD7	49'	39'
LD9	68'	54'
LD10	89'	80'



Dimensions (Dimensions are approximate and subject to change):



Power consumption chart

Series	Battery	Voltage	DC specs					AC specs				
			Battery capacity (in watts)				Units dual voltage ¹	Current			Power	
			90 Mins	2 Hrs	3 Hrs	4 Hrs		Maximum	Stand by	Maximum	Stand by	
MPHM40	Lead-calcium	12V	40	30	24	12	120VAC	0.25A	0.25A	30W	11W	
MPHN40	Nickel-cadmium	12V	40	30	24	12	277VAC	0.12A	0.05A	30W	11W	

¹ Stand-by power consumption is 50% lower for lead-calcium batteries

Accessories (Order as a separate item)

Description	Product code
Remote test switch (Metal faceplate)	PSW
Remote test switch (Plastic faceplate)	PSW-1

Ordering format – Battery unit

Series	Battery	Capacity	Number of heads	Lamp type	Options
MPH	M= Lead-calcium N= Nickel-cadmium	40= 12V-40W	-2= Two lamps	MR16 LED (LD7)= 12V-4W (LD9)= 12V-5W (LD10)= 12V-6W	Blank= No options ID= Improved Diagnostics (audible) ¹ IDNA= Improved Diagnostics (non audible) ¹ T3= Time delay (15 minute) DL= Damp location ²

Example: MPH40-2(LD7)DL

¹ -ID & -IDNA include a time delay feature that can be enabled/ disabled in the field or set by the factory by including -ID-TD* or -IDNA-TD*

² Available on all models except lead-calcium

Ordering format – Generator

Series	Input voltage	Number of heads	Lamp type	Options
MPHG= Generator unit	1= 120VAC, 60Hz 2= 277VAC, 60Hz	-2= Two lamps	MR16 LED (LD7)= 12V-4W (LD9)= 12V-5W (LD10)= 12V-6W	DL= Damp location

Example: MPHG1-2(LD7)DL

Note: For complete 12V MR16 lamp information refer to Remote Fixture, Phantom™ Series, Lamp Selection Chart at www.lightalarms.com

TBR Series

Recessed steel housing

6V up to 81W, 12V up to 110W, 24V up to 110W capacities



This emergency light has a fully recessed housing that blends in for architectural unity. Provides wide center-to-center spacing of up to 100 feet at a 7-foot mounting height using LJ lamps.



Available head style choices:

ELF3

DR130

Head style suffix:

/E3

/D1

Housing

- Steel housing
- Standard off-white finish, optional black finish
- Lighting heads, available in thermoplastic or decorative die-cast aluminum
- Choice of MR16 LED lamp wattages

Mounting

- Fully recessed ceiling
- Hanger bars included for lay-in installation in t-bar grid

Electronics

- Pulse plus charger
- Low voltage disconnect
- Automatic brownout protection
- Battery lock-out
- Fused output circuit
- Optional: **Improved Diagnostics**
- Optional: Nexus® monitoring system
- 120/277 60Hz

Choice of sealed maintenance-free battery

- 6V, 12 or 24V lead-calcium battery
- 6V or 12V nickel-cadmium battery

Approval

- UL 924 listed
- New York City Approved

Warranty (subject to proper installation and maintenance)

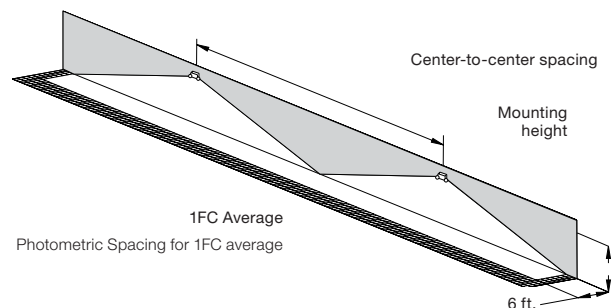
Unit: five-year limited warranty

Detailed warranty terms located **online at:** www.lightalarms.com

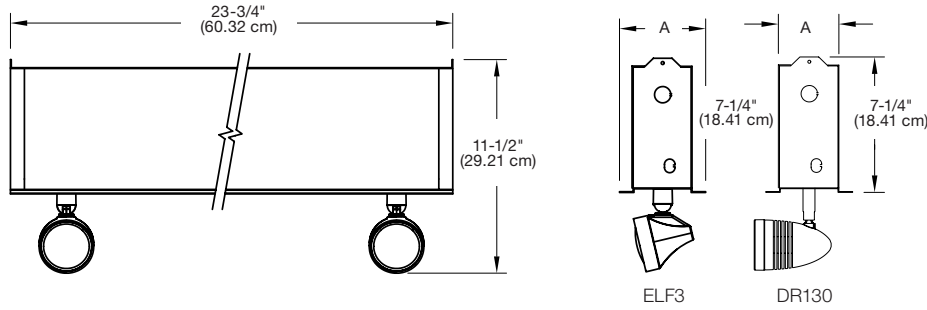


Photometric performance

Lamp	Spacing center-to-center (feet)	
	7 feet mounting height	15 feet mounting height
LD1	43'	36'
LD7	55'	43'
LD9	71'	56'
LD10	100'	85'
LD13	56'	44'
LD14	100'	85'



Dimensions (Dimensions are approximate and subject to change)



Cabinet dimensions

Units	Cabinet	A
54W and under	S	4-5/8"
81W and higher	L	7-1/8"

Power consumption chart

Series	Battery	Voltage	DC specs				AC specs	
			Battery capacity (in watts)				Units dual voltage ¹	Current maximum
			90 Mins	2 Hrs	3 Hrs	4 Hrs		
TBRC0	Lead-calcium	6V	18	12	0	0		
TBRC1	Lead-calcium	6V	27	18	14	10		
TBRC5	Lead-calcium	6V	36	25	20	14		
TBRC2	Lead-calcium	6V	54	37	28	21		
TBRC3	Lead-calcium	6V	81	54	42	30		
T12BRC0	Lead-calcium	12V	54	37	28	21		
T12BRC1	Lead-calcium	12V	110	72	56	40	120VAC	0.3A
T24BRC1	Lead-calcium	24V	110	72	56	40	277VAC	0.15A
TRBC1	Ni-Cd with option (-N)	6V	18	12	0	0		
TRBC2	Ni-Cd with option (-N)	6V	25	18	12	9		
T12BRC1	Ni-Cd with option (-N)	12V	36	21	15	12		
T12BRC2	Ni-Cd with option (-N)	12V	50	31	25	18		

¹ All units 120/277 dual voltage, information based on wiring to specific voltage type

Accessories (Order as a separate item)

Description	Product code
Remote test switch (metal faceplate)	PSW
Remote test switch (plastic faceplate)	PSW-1

Ordering format

Number of heads	Series/Battery/Capacity	Head style	Lamp type	Options
Blank = No heads	Lead-calcium battery	/E3 = ELF3 (MR16, Plastic)	LD1 = 6V-4W MR16 LED	Blank = Mist white housing, no options
1= 1 head	TBRC0 = 6V-18W	/D1 = DR130 (MR16, Metal)	LD7 = 12V-4W MR16 LED	-ID = Improved Diagnostics (audible) ¹
2= 2 heads	TBRC1 = 6V-27W		LD9 = 12V-5W MR16 LED	-IDNA = Improved Diagnostics (non audible) ¹
3= 3 heads	TBRC5 = 6V-36W		LD10 = 12V-6W MR16 LED	-NEXRF = Nexus [®] wireless compatible ² (consult your sales representative)
	TBRC2 = 6V-54W		LD13 = 24V-4W MR16 LED	-B = Black housing
	TBRC3 = 6V-81W		LD14 = 24V-6W MR16 LED	-TD15 = Time delay (15 minutes)
	T12BRC0 = 12V-36W			-N = Nickel-cadmium battery
	T12BRC2 = 12V-54W			
	T12BRC1 = 12V-110W			
	T24BRC1 = 24V-110W			
	For nickel-cadmium battery (must include option -N)			
	TRBC1 = 6V-18W			
	TRBC2 = 6V-25W			
	T12RBC1 = 12V-36W			
	T12RBC2 = 12V-50W			

Example: 2TBRC2/D1LD1-ID

¹ -Minimum lamp load required: 20% of unit capacity. Not available with 100W N-Cd 24V. Should also apply to NEX and NEXRF.

² -NEX & -NEXRF is CSA-US approved only.

RD Series

Recessed steel housing

6V up to 36W, 12V up to 36w capacities



A decorator-friendly low-profile emergency light available with a selection of lighting heads to suit any décor.



Available head style choices:

ELF3

DR130

Head style suffix:

/E3

/D1

Housing

- Steel housing
- Standard off-white finish, optional black finish
- Lighting heads, available in thermoplastic or decorative die-cast aluminum
- Choice of MR16 LED lamp wattages

Mounting

- Fully recessed ceiling or wall-mount
- Hanger bars included for lay-in installation in T-bar grid
- Suitable for sheet rock installation

Electronics

- Pulse plus charger
- Low voltage disconnect
- Automatic brownout protection
- Battery lock-out
- Fused output circuit
- Optional: **Improved Diagnostics**
- 120/277 60Hz

Choice of sealed maintenance-free battery

- 6V or 12V lead-calcium battery
- 6V or 12V nickel-cadmium battery

Approvals

- UL 924 listed
- New York City Approved

Warranty (subject to proper installation and maintenance)

Unit: five-year limited warranty

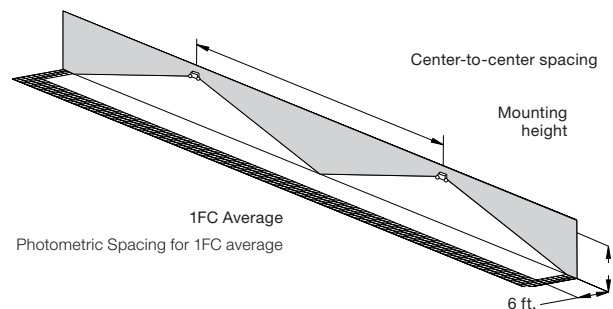
Detailed warranty terms located [online at: www.lightalarms.com](http://www.lightalarms.com)



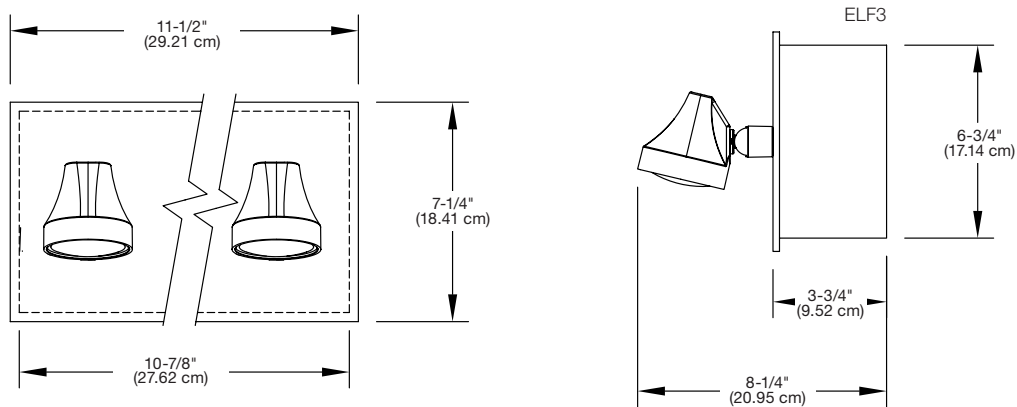
Photometric performance

Lamp	Spacing center-to-center (feet)	
	7 feet mounting height	15 feet mounting height
LD1	43'	36'
LD7	55'	43'
LD9	71'	56'
LD10	100'	85'

See lamp table



Dimensions (Dimensions are approximate and subject to change)



Power consumption chart

Series	Battery	Voltage	DC specs				AC specs	
			Battery capacity (in watts)				Units dual voltage ¹	Current maximum
			90 Mins	2 Hrs	3 Hrs	4 Hrs		
RD6M1	Lead-calcium	6V	18	12	0	0	120VAC 277VAC	0.3A 0.15A
RD6M2	Lead-calcium	6V	27	18	14	10		
RD6M3	Lead-calcium	6V	36	25	20	14		
RD12M3	Lead-calcium	12V	36	25	20	14		
RD6C1	Nickel-cadmium	6V	18	18	0	0		
RD6C2	Nickel-cadmium	6V	25	18	12	9		
RD12C3	Nickel-cadmium	12V	36	21	15	12		
RD12C4	Nickel-cadmium	12V	50	36	25	18		

¹ All units 120/277 dual voltage, information based on wiring to specific voltage type

Accessories (Order as a separate item)

Description	Product code
Wire guard (DR130 or ELF3 heads)	WG6-L
Remote test switch (Metal faceplate)	PSW
Remote test switch (Plastic faceplate)	PSW-1

Ordering format

Number of heads	Series/Battery/Capacity	Head style	Lamp type	Options
Blank = No heads	Lead-calcium battery	/E3 = ELF3 (MR16, Plastic)	LD1 = 6V-4W MR16 LED	Blank = Mist white housing, no options
1= 1 head	RD6M1 = 6V-18W	/D1 = DR130 (MR16, Metal)	LD7 = 12V-4W MR16 LED	-B = Black housing
2= 2 heads	RD6M2 = 6V-27W		LD9 = 12V-5W MR16 LED	-ID = Improved Diagnostics (audible) ¹
	RD6M3 = 6V-36W		LD10 = 12V-6W MR16 LED	-IDNA = Improved Diagnostics (non audible) ¹
	RD12M3 = 12V-36W			-T3 = Time delay (15 minutes)
	Nickel-cadmium battery			
	RD6C1 = 6V-18W			
	RD6C2 = 6V-25W			
	RD12C3 = 12V-36W			
	RD12C4 = 12V-50W			

Example: RD12M3/DR130LD9-IDNA

¹ Minimum lamp load required: 20% of unit capacity

Camray™ LED Series

Recessed steel housing 6V up to 36W, 12V up to 36w capacities



High-performance lighting from a low-profile fixture. Powerful wide beam LED lights provide impressive spacing of 50 to 70 feet. NEMA-3R rated for indoor or outdoor use.

Housing

- Indoor/outdoor suitable for wet location
- Die-cast aluminum housing
- UV-resistant (3" x 1.5") polycarbonate lens

Mounting

- Wall mount
- 1/2" rigid conduit top entry
- Universal J-box mounting pattern

Lamp type

- Patent-pending light engine: four power LEDs with redundant connections
- 400-640 lumens
- Color temperature: 5000K
- Optional forward-throw light distribution, for applications of outdoor egress
- Optional high-lumen output

- Optional dual-mode operation: normal and emergency LED lighting with separate AC inputs
- Pulse plus charger
- Low voltage disconnect
- Automatic brownout protection
- Battery lock-out
- Fused output circuit
- Standard **Improved Diagnostics**
- 120/277 60Hz

Approval

- UL 924 listed
- Nema-3R rated for indoor/outdoor cold-weather wet and damp locations: -4°F to 104°F (-20°C to 40°C)

Warranty (subject to proper installation and maintenance)

Unit: five-year full warranty

Detailed warranty terms located **online at: www.lightalarms.com**

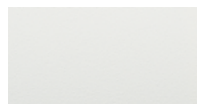
Unit color



Platinum gray



Black



White



Dark bronze (painted)

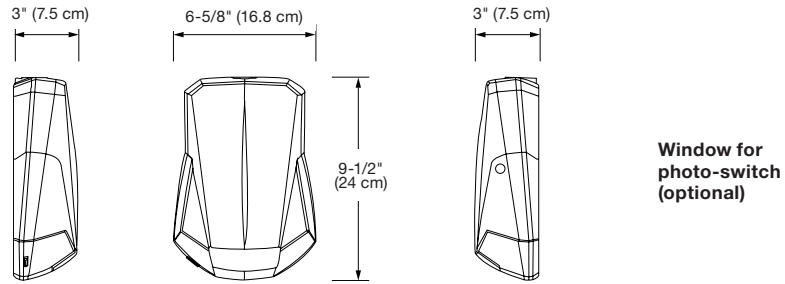
NEMA-3R 

Power consumption chart

Model	DC Specs				AC Specs
	Normal lighting		Emergency lighting		6-12V ¹
	Current (maximum)	Power (maximum)	Current (maximum)	Power (maximum)	Power (maximum)
AC, 2AC, ACDC, DC	0.12/0.08A	12W	0.11/0.08A	12W	8W
All above, -H	0.18/0.11A	18W	0.18/0.11A	18W	14W (VDC only)
ACSD, SD, SD-H	0.12/0.06A	12W	0.05/0.02A	5W	
SD-CW	-	-	0.15/0.07A	16W	N/A ¹
ACSD-CW-P, -FT		N/A ¹	0.22/0.10A	24W	

¹ Only unswitched AC input; normal lighting with photo-switch or remote control

Dimensions (Dimensions are approximate and subject to change)



Photometric performance

Table A – Spacing for NFPA101 (average = 1FC) – Average of 1 foot-candle

Model type	Mounting height	Lumen	Color temperature	Width x length (ft)	
				Single unit	Center-to-center
Standard	9'	400	5000K	6' X 50'	6' X 50'
With option -H	11'	550		6' X 60'	6' X 60'
With option -FT	12'	460			3' X 70'
With option -FTH	15'	640		6' X 40'	–
				6' X 50'	–

Indoor reflectance: 80/50/20 and 10-ft wide corridor. Outdoor reflectance: 0/30/10

Note: The illumination level meets ALL the requirements of the Life Safety Code (NFPA 101):

- 1) Average of 1 foot-candle or more
- 2) Minimum at any point of 0.1 foot-candle or more
- 3) Maximum-to-minimum illumination uniformity ratio of 40:1 or less

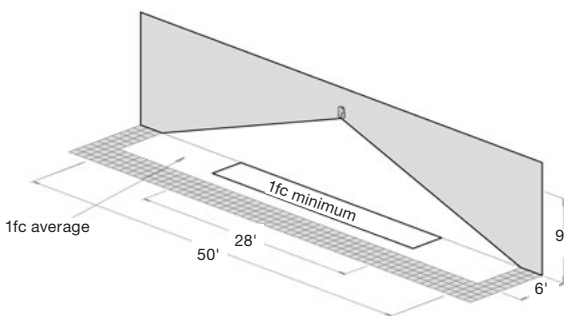
Table B – Spacing for minimum illumination = 1FC – Minimum of 1 foot-candle

Model type	Mounting height	Lumen	Color temperature	Width x length (ft)	
				Single unit	Center-to-center
Standard	9'	400	5000K	4' X 28'	6' X 32'
With option -H	11'	550		4' X 32'	6' X 40'
With option -FH	12'	460		4' X 22'	–
With option -FTH	15'	640		4' X 27'	–

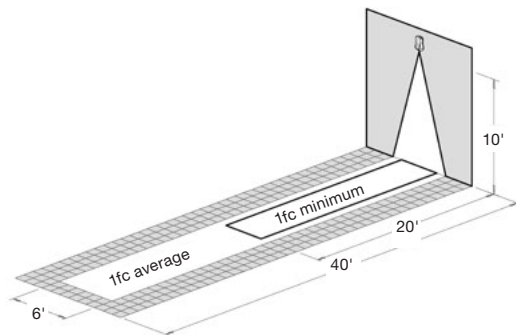
Photometry performance

Whether installed indoors or outdoors, with spacing measurements for a single unit or between two units center-to-center, the Camray® Series LED delivers a stable and consistent illumination making it easy to specify in a wide range of applications. The outstanding spacing of illumination ranges from 50 to 70 feet for standard units (wide beam) and from 40 to 50 feet with the forward-throw beam option.

Photometry performance – Wide beam



Photometry performance – Forward throw



Ordering format – Battery unit

Series	Model	Color	Options
CAM= Camray LED battery unit	Nickel-metal hydride battery units (standard with Self-Diagnostics)	B= Black DB= Dark bronze OW= Off white PG= Platinum gray	-CW= Cold weather (-40°F - 86°F) (-40°C - 30°C); not available with option -H -FT= Forward throw lighting -H= High lumen output (32... 86°F / 0... 30°C; model SD only)
	SD= Self-powered & self-diagnostic (-4°F + 122°F) (-20°C + 50°C) ACSD= Dual-mode AC/self-powered (-4°F + 104°F) (-20°C + 40°C)		-P= Photo-switch, (model models ACSD only) -T3= Time delay: 15 minutes (models ACSD, SD only) -RC= Remote control - infrared ¹

Example: CAMSDOW-RC

¹ For ACSD Model only, with -RC option, order the remote control keypad (TB-RC1-L) separately

MG & MN Series

Steel housing 6V up to 36W & 12V up to 54W capacities



For maximum versatility, the MG & MN Series steel housing emergency lighting battery unit accommodates a wide range of lamp heads and lamps, and even has a front-mounted head option for low ceiling installations.



Available head style choices: ELF3 DR130
Head style suffix: /ELF3 /DR130

Housing

- Steel housing
- Standard mist white finish, optional black finish
- Choice of MR16 LED lamp voltages and wattages
- Heads available in thermoplastic or decorative die-cast aluminum

Mounting

- Ceiling or wall mount
- Universal J-box mounting

Electronics

- Pulse plus charger
- Low voltage disconnect
- Automatic brownout protection
- Battery lock-out
- Fused output circuit
- Optional **Improved Diagnostics**
- Optional Nexus® monitoring system
- 120/277 60Hz

Choice of battery

- 6V or 12V lead-calcium battery
- 6V or 12V nickel-cadmium battery

Approvals

UL 924 Standard

Warranty (subject to proper installation and maintenance)

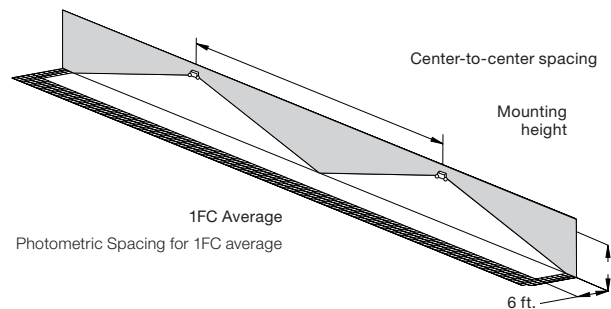
Unit: three-year limited warranty

Detailed warranty terms located **online at: www.lightalarms.com**



Photometric performance

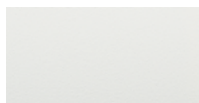
Lamp	Spacing center-to-center (feet)	
	7 feet mounting height	15 feet mounting height
LD1	43'	36'
LD7	55'	43'
LD9	71'	56'
LD10	100'	85'



Housing color

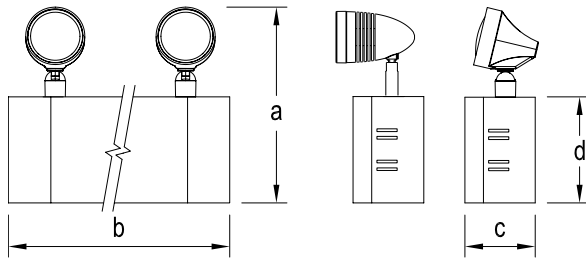


Black



Mist White

Dimensions (Dimensions are approximate and subject to change)



Cabinet dimensions

Units	Cabinet	a	b	c	d
50W and under	S	11-3/8"	11"	3-1/2"	5-1/4"
54W and higher	L	12-3/8" 10-3/4"	12-1/2"	4"	6-1/4"

Power consumption chart

Series	Battery	Voltage	DC specs				AC specs	
			Battery capacity (in watts)				Units dual voltage ¹	Current maximum
			90 Mins	2 Hrs	3 Hrs	4 Hrs		
MG18	Lead-calcium	6V	18	12	0	120VAC 277VAC	0.3A 0.15A	
MG1		6V	27	18	14			
MG2		6V	54	37	28			21
M12G1		12V	36	25	20			14
M12G2	Nickel-cadmium	12V	54	37	28	21		
MN1		6V	25	18	12	0		
M12N1		12V	36	21	15	12		
M12N2		12V	50	36	25	18		

¹ All units 120/277 dual voltage, information based on wiring to specific voltage type

Accessories (Order as a separate item)

Description	Product code
Mounting platform	MP-PQA
Wire guard (S cabinet)	WG1-L
Wire guard (L cabinet)	WG2-L
Wire guard (Front mounted heads)	WG10-L

Ordering format

Number of heads	Series/Capacity	Head style	Lamp type	Housing color	Options
0= No Heads	Lead-calcium battery	/ELF3= ELF3 (MR16, Plastic)	LD1= 6V-4W MR16 LED LD7= 12V-4W MR16 LED	-M= Mist white -B= Black	Blank= No options -ID= Improved Diagnostics (audible) ² -IDNA= Improved Diagnostics (non audible) ² -FM= Front mounted heads -NEXRF= Nexus [®] wireless (contact your sales representative) -T3= Time delay (15 minute) -FM= Front mounted heads -3CP= 120V Cord & plug, 3 wire, 3ft long ³ -3CP277= 120V cord & plug 3 wire, 3 ft. long ³
1= One Head	MG18= 6V-18W				
2= Two Heads	MG1= 6V-27W MG2= 6V-54W ¹ M12G1= 12V-36W M12G2= 12V-54W ¹ Nickel-cadmium battery MN1= 6V-25W M12N1= 12V-36W M12N2= 12V-50W	/DR130= DR130 (MR16, Metal)	LD9= 12V-5W MR16 LED LD10= 12V-6W MR16 LED		

Example: 2MG18/ELF3-LD1-M-ID

¹ MG2 & M12G2 models use L cabinet size

² -ID & -IDNA include a time delay feature that can be enabled/disabled in the field or set by the factory by including -ID-TD* or -IDNA-TD*

³ -3CP custom lengths available. Consult your sales representative

MG/MN-SP Series

Steel housing 12V up to 40W capacities lead-calcium or nickel-cadmium battery high performance LED heads, suitable for NEMA 1 location



Housing

- Steel housing
- Standard gray finish, optional black finish

Lamp heads

- 6W (L6 lamp suffix), 10W (L10 lamp suffix) and 15W (L15 lamp suffix) high efficacy LED emergency heads outperform traditional 50W MR16-IR Halogen
- Black heads available in 15W (L15 lamp suffix) only
- Innovative head design: four-LED and dual-driver provide illumination even in case of unexpected component failure
- Die-cast aluminum, LED heads

Mounting

- Wall mount
- Universal J-box mounting

Electronics

- Pulse plus charger
- Low voltage disconnect
- Automatic brownout protection
- Battery lock-out
- Fused output circuit
- Optional: **Improved Diagnostics**
- Optional: Nexus® monitoring system
- 120/277 60Hz

Choice of battery

- 12V lead-calcium battery
- 12V nickel-cadmium battery

Approvals

UL 924 Listed

Warranty (subject to proper installation and maintenance)

Unit: five-year limited warranty

Detailed warranty terms located **online at: www.lightalarms.com**

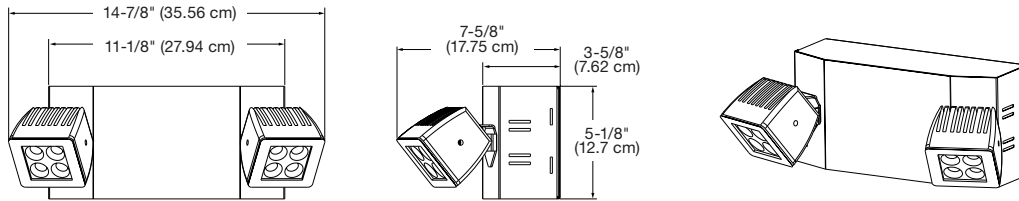


Power consumption chart

Series	Battery	Voltage	DC specs				Units dual voltage ¹	AC specs Current Maximum
			Battery capacity (in watts)					
			90 Mins	2 Hrs	3 Hrs	4 Hrs		
M12G1	Lead-Calcium	12V	36	25	20	14	120VAC / 277VAC	0.3A / 0.15A
M12N1	Nickel-Cadmium	12V	30	21	15	12		
M12N2		12V	40	36	25	18		

¹ All units 120/277 dual voltage, information based on wiring to specific voltage type

Dimensions (Dimensions are approximate and subject to change)



Photometry performance

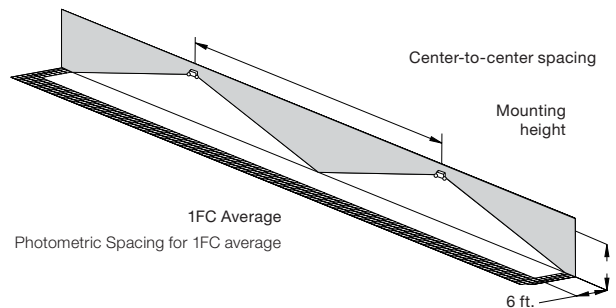
For NEMA 1 type application, the MG/MN-SP Series LED emergency lights deliver a stable and consistent illumination on the path of egress for a wide range of mounting heights. Depending on the required illumination levels need for the application, choose between three level of lumen output using a 6W, 10W or 15W head.

LED Head	Power	Total lumens	Outperform spacing of MR16 halogen lamp types
L6	6W	565	37W PAR36, MR16 halogen
L10	10W	1000	50W PAR36, MR16 halogen
L15	15W	1300	50W MR16-IR halogen

Spacing center-to-center (feet)

Mounting height	Lamp L6/6W, 565Lm	Lamp L10/10W, 1000Lm	Lamp L15/15W, 1300Lm
10 ft	80'	110'	140'
15 ft	70'	105'	135'
20 ft	60'	100'	130'
25 ft	50'	95'	120'

Industrial environment: Wall mounted equipment, reflectances: 10/10/10;
6-ft wide illumination path. Illumination as per NFPA101; Average: 1fc;
Min: 0.1fc; Max/min< 40:1



Accessories (Order as a separate item)

Description	Product code
Mounting platform	MP-PQA
Wire guard	WG10-L

Ordering format

Number of heads	Series/Capacity	Head style	Housing color	Mounting head	Options
2= Two heads	Lead-calcium battery M12G1SP= 12V-36W Nickel-cadmium battery M12N1SP= 12V-30W M12N2SP= 12V-40W	/L6= 12V-6W (565 Lumens) /L10= 12V-10W (1000 Lumens) /L15= 12V-15W (1300 Lumens)	-G= Gray -B= Black	FM= Front mount heads	Blank = No options -ID = Improved Diagnostics (audible) ¹ -IDNA = Improved Diagnostics (non audible) ¹ -NEXRF = Nexus® wireless compatible ² -T3 = Time delay (15 minute) -3CP = 120V cord & Plug, 3 wire, 3ft long ³ -3CP277 = 277V cord & plug, 3 wire, 3ft long ³

Example: 2M12G1SP/L15-G-FM-ID

¹ -ID & -IDNA include a time delay feature that can be enabled/ disabled in the field or set by the factory by including -ID-TD* or -IDNA-TD*

² -NEX & -NEXRF is CSA-US approved only. Consult your sales representative

³ -3CP & -3CP277 custom lengths available . Consult your sales representative

PG & P12G Series



Steel housing 6V up to 54W & 12V-54W capacities lead-calcium battery



Available Head Style Choices: ELF3 DR130
Head Style Suffix: /ELF3 /DR130

Housing

- Steel housing
- Standard mist white finish, optional black finish
- Choice of MR16 LED lamp voltages and wattages
- Heads available in thermoplastic or decorative die-cast aluminum

Mounting

- Wall mount
- Universal J-box mounting

Electronics

- Pulse plus charger
- Low voltage disconnect
- Automatic brownout protection
- Battery lock-out
- Fused output circuit
- Optional: **Improved Diagnostics**
- Optional: Nexus® monitoring system
- 120/277 60Hz

Photometric performance

Lamp	Spacing center-to-center (feet)	
	7 feet mounting height	15 feet mounting height
LD1	43'	36'
LD7	55'	43'
LD9	71'	56'
LD10	100'	85'

Choice of battery

- 6V or 12V lead-calcium battery

Approvals

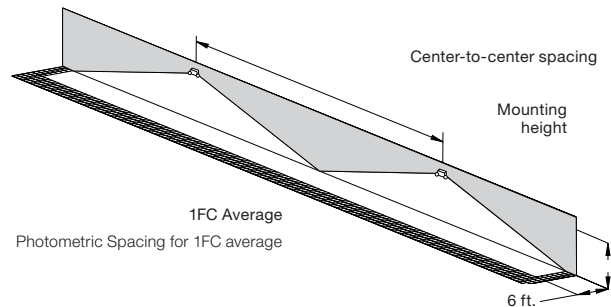
- UL 924 Standard
- New York City Approved

Warranty (subject to proper installation and maintenance)

Unit: three-year limited warranty

Detailed warranty terms located **online at:** www.lightalarms.com

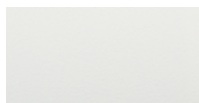
nexus



Housing color

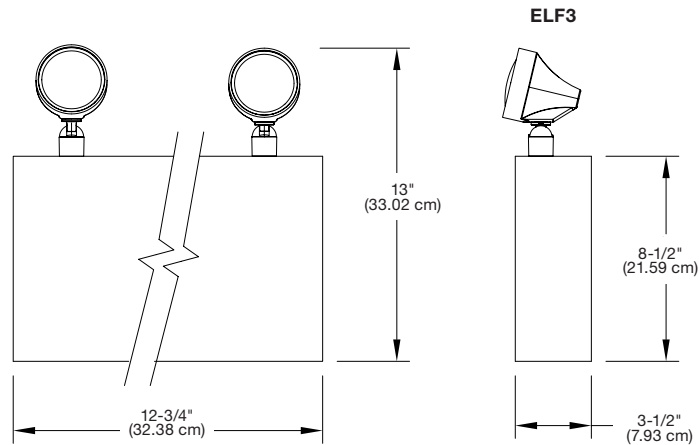


Black



Mist White

Dimensions (Dimensions are approximate and subject to change)



Power consumption chart

Series	Battery	Voltage	DC specs				AC specs	
			Battery capacity (in watts)				Units dual voltage ¹	Current maximum
			90 Mins	2 Hrs	3 Hrs	4 Hrs		
PG1	Lead-calcium	6V	18	15	0	0	120VAC 277VAC	0.25A 0.15A
PG2		6V	54	36	27	18		
P12G1		12V	54	36	27	18		

¹ All units 120/277 dual voltage, information based on wiring to specific voltage type

Accessories (Order as a separate item)

Description	Product code
Wire guard	WG2-L
Mounting platform	MP-PQA

Ordering format

Number of heads	Series/Capacity	Head style	Lamp type	Housing color	Options
0= No heads	PG1 = 6V-18W	/ELF3 = ELF3	LD1 = 6V-4W MR16 LED	-M = Mist White	Blank = No Options
1= One head	PG2 = 6V-54W	(MR16, Plastic)	LD7 = 12V-4W MR16 LED	-B = Black	-ID = Improved Diagnostics (audible) ^{1,3}
2= Two heads	P12G1 = 12V-54W	/DR130 = DR130	LD9 = 12V-5W MR16 LED		-IDNA = Improved Diagnostics (non audible) ^{1,3}
3= Three heads		(MR16, Metal)	LD10 = 12V-6W MR16 LED		-NEXRF = Nexus® wireless (contact your sales representative) ³
					-T3 = Time delay (15 minute)
					-DS = Lamp disconnect switch
					-VS = Vandal-resistant screws
					-3CP = 120V cord & plug, 3 wire, 3ft long ²

Example: 2PG1/DR130LD1

¹ -ID & -IDNA include a time delay feature that can be enabled/disabled in the field or set by the factory by including -ID-TD* or -IDNA-TD*

² -3CP custom length available. Consult your sales representative

³ Minimum lamp load required: 20% of unit capacity

PQ & P12Q Series



Steel housing 6V up to 200W & 12V up to 200W capacities lead-calcium battery



Available Head Style Choices: ELF3 DR130
Head Style Suffix: /ELF3 /DR130

Housing

- Steel housing
- Standard mist white finish, optional black finish
- Choice of MR16 LED lamp voltages and wattages
- Heads available in Thermoplastic or decorative die-cast aluminum

Mounting

- Wall mount
- Universal J-box mounting

Electronics

- Pulse plus charger
- Low voltage disconnect
- Automatic brownout protection
- Battery lock-out
- Fused output circuit
- Optional: **Improved Diagnostics**
- Optional: Nexus® monitoring system
- 120/277 60Hz

Photometric performance

Lamp	Spacing center-to-center (feet)	
	7 feet mounting height	15 feet mounting height
LD1	43'	36'
LD7	55'	43'
LD9	71'	56'
LD10	100'	85'

Choice of sealed maintenance-free battery

6V or 12V nickel-cadmium battery

Approvals

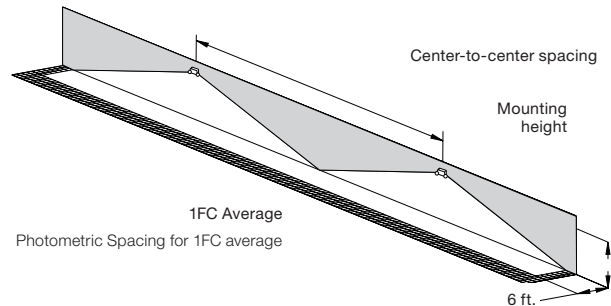
- UL 924 Standard
- New York City Approved

Warranty (subject to proper installation and maintenance)

Unit: three-year full warranty

Detailed warranty terms located **online at: www.lightalarms.com**

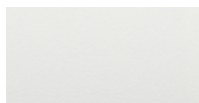
nexus



Housing color

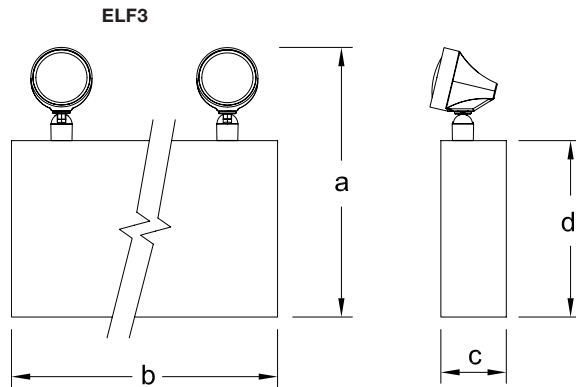


Black



Mist White

Dimensions (Dimensions are approximate and subject to change)



Cabinet dimensions

Cabinet	Dimensions			
	a	b	c	d
B	14-3/4" (35.56cm)	16-1/8" (40.95cm)	5-7/16" (13.81cm)	10-1/4" (26.03cm)
C	18-3/8" (46.67cm)// 16 3/4" (42.54cm)	16-1/2" (41.91cm)	7-1/4" (18.41cm)	12-1/4" (32.38cm)

100W unit use B Cabinet dimensions
200W unit use C Cabinet dimensions

Power consumption chart

Series	Battery	Voltage	DC specs				AC specs	
			Battery capacity (in watts)				Units dual voltage ¹	Current maximum
			90 Mins	2 Hrs	3 Hrs	4 Hrs		
PQ2	Nickel-cadmium	6V	100	75	50	120VAC 277VAC	0.3A 0.15A	
PQ3		6V	200	150	100			
P12Q1		12V	100	75	50			
P12Q2		12V	200	150	100			

¹ All units 120/277 dual voltage, information based on wiring to specific voltage type

Accessories (Order as a separate item)

Description	Product code
Wire guard	WG3-L
Mounting platform (B cabinet)	MP-PQA
Mounting platform (C cabinet)	MP-PQB

Ordering format

Number of heads	Series/Capacity	Head style	Lamp type	Housing color	Options
0= No heads	PQ2 = 6V-100W	/ELF3 = ELF3	LD1 = 6V-4W MR16 LED	-M = Mist white	Blank = No options
1= One head	PQ3 = 6V-200W	(MR16, Plastic)	LD7 = 12V-4W MR16 LED	-B = Black	-ID = Improved Diagnostics (audible) ^{1,3}
2= Two heads	P12Q1 = 12V-100W	/DR130 = DR130	LD9 = 12V-5W MR16 LED		-IDNA = Improved Diagnostics (non audible) ^{1,3}
3= Three heads	P12Q2 = 12V-200W	(MR16, Metal)	LD10 = 12V-6W MR16 LED		-NEXRF = Nexus® wireless (contact your sales representative) ³
					-T3 = Time delay (15 minute)
					-PTS = Photocell test switch
					-DS = Lamp disconnect switch
					-VS = Vandal-resistant screws
					-3CP = 120V Cord & plug, 3 wire, 3ft long ²

Example: 2P12Q1/DR130LD10-M

¹ -ID & -IDNA include a time delay feature that can be enabled/disabled in the field or set by the factory by including -ID-TD* or -IDNA-TD*

² -3CP custom length available. Consult your sales representative

³ Minimum lamp load required: 20% of unit capacity, only available on P12Q1 models

PN LED Battery Series

3.6V Steel Enclosure



Ideal for spaces that require a highly efficient LED emergency lighting unit with 2 or 3 lighting heads and a steel enclosure. Each lamp head provides 150 lumens.

Housing

- Constructed of 20 gauge heavy-duty steel and a durable white powder-coat finish
- The 3PN-LED unit is furnished with 3 (1.5W LED) heads and the 2PN-LED unit is furnished with 2 (1.5W LED) heads
- Each head provides 150 lumens output

Electronics

- 120V/277V Input standard
- Low voltage disconnect prevents over discharge of battery
- Brownout protection standard
- Long life maintenance-free battery
- 3.6V nickel-cadmium battery

Approvals

- UL 924 Standard
- Complies with NEC, Life Safety Code and OSHA.

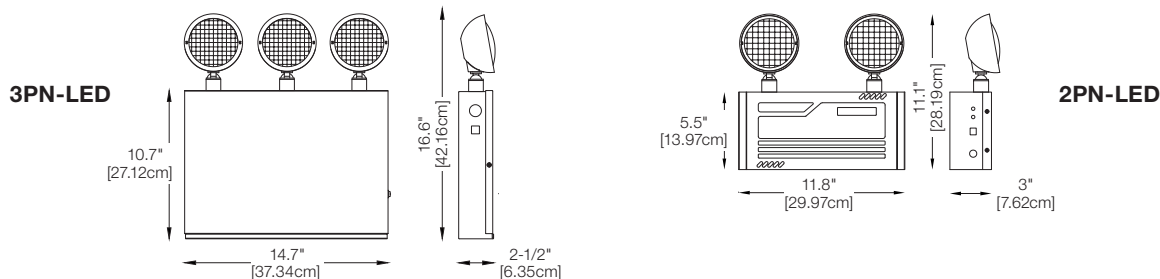
Warranty (subject to proper installation and maintenance)

- Unit has a three-year full warranty (excluding lamps and fuses)
- Nickel-cadmium battery has a five-year full, plus five-year pro-rata warranty

Detailed warranty terms located [online at: www.lightalarms.com](http://www.lightalarms.com)



Dimensions (Dimensions are approximate and subject to change):



Power consumption chart

Series	Battery type	DC specs		AC specs
		DC voltage	Units dual voltage ¹	Current maximum
2PN-LED	Nickel-cadmium	3.6V	120VAC/277VAC	120mA
3PN-LED		3.6V		150mA

¹All units 120/277 dual voltage, information based on wiring to specific voltage type

Ordering format

Series	Description
2PN-LED	2 X 1.5W LED heads
3PN-LE	3 X 1.5W LED heads

Example: 2PN-LED

Remote Head & Unit Head DR Series

Designer surface-mounted remote light fixtures meet a range of photometric requirements with MR16 LEDs in single, double or triple lamp head configurations.



Description

- Indoor use
- Powder-coated die cast aluminum construction

Finish

Mist-white or black

Lamp type

Choice of MR16 LED lamp voltages and wattages

Mounting

- Surface mount
- Universal J-Box mounting

Warranty (subject to proper installation and maintenance)

Unit: three-year full warranty

Detailed warranty terms located [online at: www.lightalarms.com](http://www.lightalarms.com)



Accessories (Order as a separate item)

Description	Product code
Wire Guard for DR1130, DR2130	WG8-L
Wire Guard for DR3130	WG2-L

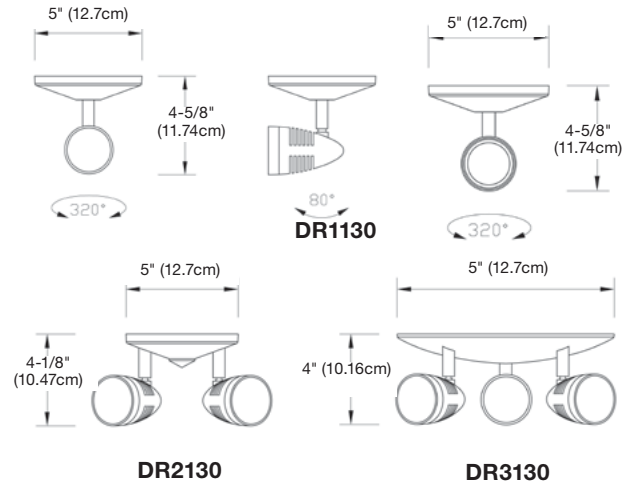
Ordering format

Series	Lamp suffix	Color
DR1130= Single head		-WH= White
DR2130= Double head	/1	-BK= Black
DR3130= Triple head		

Example: DR1130/LD12-WH6

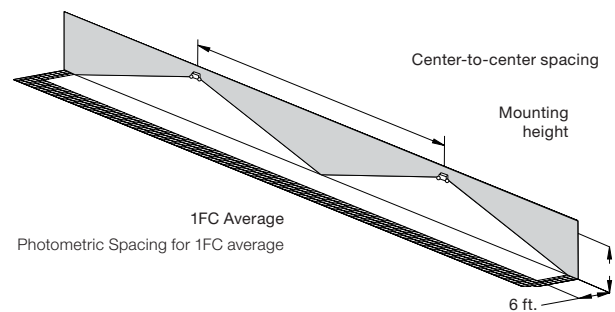
¹Choose from lamp selection chart

Dimensions (Dimensions are approximate and subject to change)



Photometric performance

Lamp	Spacing center-to-center (feet)	
	7 feet mounting height	15 feet mounting height
LD1	43'	36'
LD7	55'	43'
LD9	71'	56'
LD10	100'	85'
LD13	56'	44'
LD14	100'	85'
LD25	43'	39'



Lamp selection chart – MR16 LED lamps

Lamp suffix	Voltage	Wattage	Lumens	Replacement #
LD1	6	4	130	580.0097-L
LD7	12	4	170	580.0093-L
LD9	12	5	340	580.0104-L
LD10	12	6	540	580.0106-L
LD13	24	4	200	580.0098-L
LD14	24	4	590	580.0100-L
LD25	120	6	200	580.0010-L

Remote Head & Unit Head ELF3 Series

Thermoplastic MR16 lamp head



Description

- Indoor use
- Available as a single, double or triple head
- Thermoplastic construction
- Snap-out lens for easy lamp replacement

Finish

Mist-white or black

Lamp type

Choice of MR16 LED lamp voltages and wattages

Mounting

- Surface mount
- Universal J-Box mounting

Approval

UL 924 Listed

Warranty (subject to proper installation and maintenance)

Unit: three-year full warranty

Detailed warranty terms located [online at: www.lightalarms.com](http://www.lightalarms.com)



Lamp selection chart – MR16 LED lamps

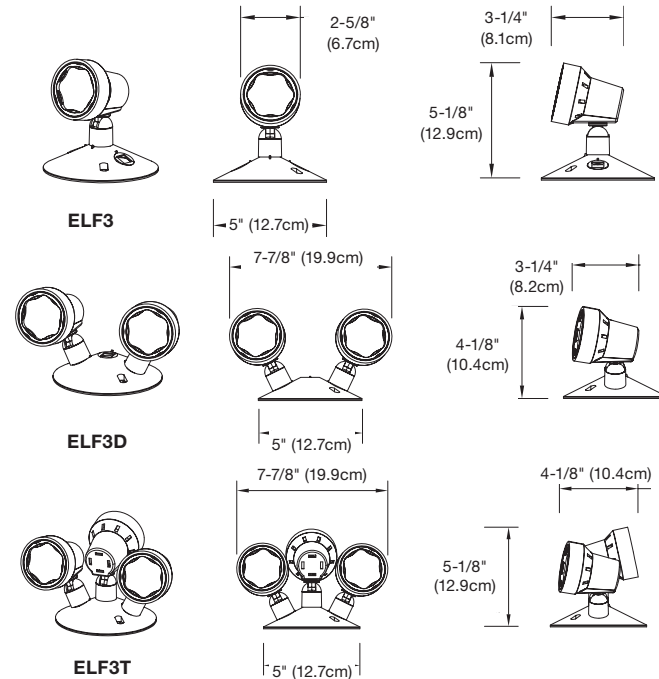
Lamp suffix	Voltage	Wattage	Lumens	Replacement #
LD1	6	4	130	580.0097-L
LD7	12	4	170	580.0093-L
LD9	12	5	340	580.0104-L
LD10	12	6	540	580.0106-L
LD13	24	4	200	580.0098-L
LD14	24	6	590	580.0100-L

Ordering format

Series	# of heads	Lamp suffix	Color	Voltage
ELF3= MR16 Par18 head	Blank = Single head	/1	-B = Black	6 = 6 VDC
Example: ELF3/LD1-B6	D = Double heads		-M = Mist white	12 = 12 VDC
	T = Triple heads			24 = 24 VDC

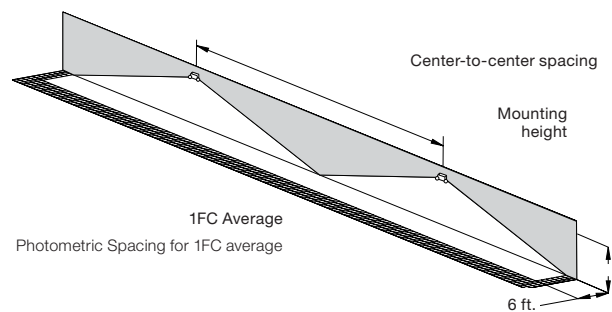
¹Choose from lamp selection chart

Dimensions (Dimensions are approximate and subject to change)



Photometric performance

Lamp	Spacing center-to-center (feet)	
	7 feet mounting height	15 feet mounting height
LD1	43'	36'
LD7	55'	43'
LD9	71'	56'
LD10	100'	85'
LD13	56'	44'
LD14	100'	85'



Accessories (Order as a separate item)

Description	Product code
Wire guard	WG8-L

ELF612D/LED Series



Thermoplastic square LED outdoor remote heads

Housing

- ELF612D/LED remote series is multi-volt 3.6, 6 or 12V, 3W total
- Thermoplastic housing and aluminum canopy with fully adjustable LED heads
- Suitable for outdoor application
- Suitable for wet location applications
- Wall or ceiling mount
- Available only in gray double head configuration

Approval

UL924 Listed

Warranty (subject to proper installation and maintenance)

Unit: three-year full warranty

Detailed warranty terms located [online at: www.lightalarms.com](http://www.lightalarms.com)



Accessories (Order as a separate item)

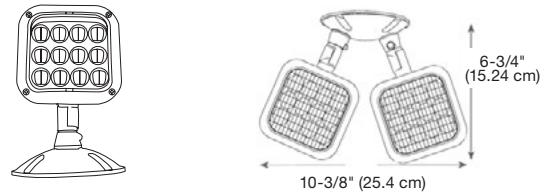
Description	Product code
Wire guard (heads in any position) wall mount	WG10-L

Ordering format

Series	# of heads	Options
ELF612	Blank= Single head D= Double heads	/LED= Thermoplastic square LED head

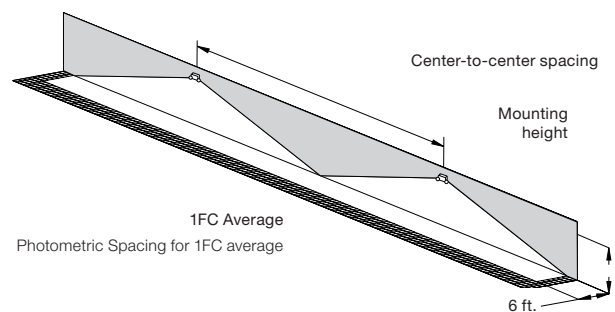
Example: ELF612D/LED

Dimensions (Dimensions are approximate and subject to change)



Photometric performance

Lamp	Spacing center-to-center (feet)	
	7 feet mounting height	15 feet mounting height
ELF612	13	4'



ELF650 Series

ELF650 NEMA-4X & NSF Certified



Description

- ELF650 and ELF650P NEMA-4X and NSF certified indoor or outdoor use
- ELF650 and ELF650P NEMA-4X and NSF certified with choice of fully gasketed cast aluminum or plastic back plate
- ELF650 and ELF650P NEMA-4X and NSF certified comes standard with Phillips head screws and tamper proof screws
- Include clear polycarbonate UV impact resistant cover

Lamp type

Choice of MR16 LED lamp voltages and wattages

Mounting

- Surface mount
- Universal J-Box mounting

Approvals

- UL 924 listed
- Vandal resistant
- NEMA-4X¹
- NSF Rated

Warranty (subject to proper installation and maintenance)

Unit: five-year full warranty

Detailed warranty terms located online at: www.lightalarms.com

¹NEMA-4X Certified when installed using a circular NEMA-4X rated junction box (sold separately by ABB under P/N 091647-L)

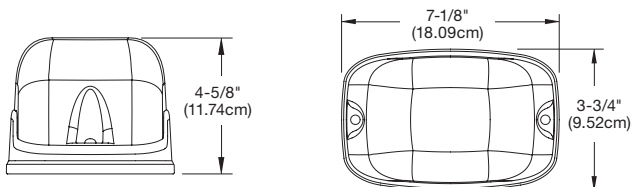


Ordering format

Series	Lamp suffix	Color	Voltage	Options
ELF650= Die-cast back plate NEMA-4X and NSF Certified with single head	/1	-M= Mist white	6= 6 VDC	Blank= no option
ELF650D= Die-cast back plate NEMA-4X and NSF Certified with double head		-B= Black	12= 12 VDC	
ELF650P= All polycarbonate NEMA-4X and NSF Certified with single head ¹		-G= Gray	24= 24V DC	
ELF650PD= All polycarbonate NEMA 4X and NSF Certified with double head ¹				

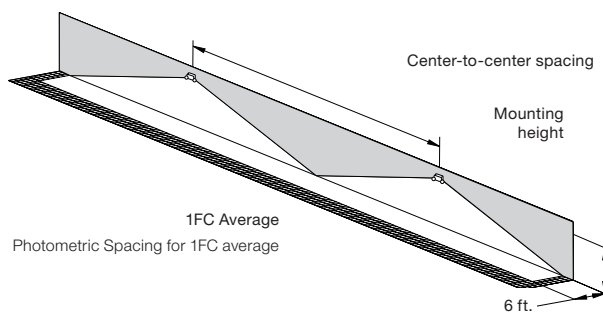
Example: ELF650/LD9-M12

Dimensions (Dimensions are approximate and subject to change)



Photometric performance

Lamp	Spacing center-to-center (feet)	
	7 feet mounting height	15 feet mounting height
LD1	39'	34'
LD7	49'	39'
LD9	68'	54'
LD10	89'	80'
LD13	51'	39'

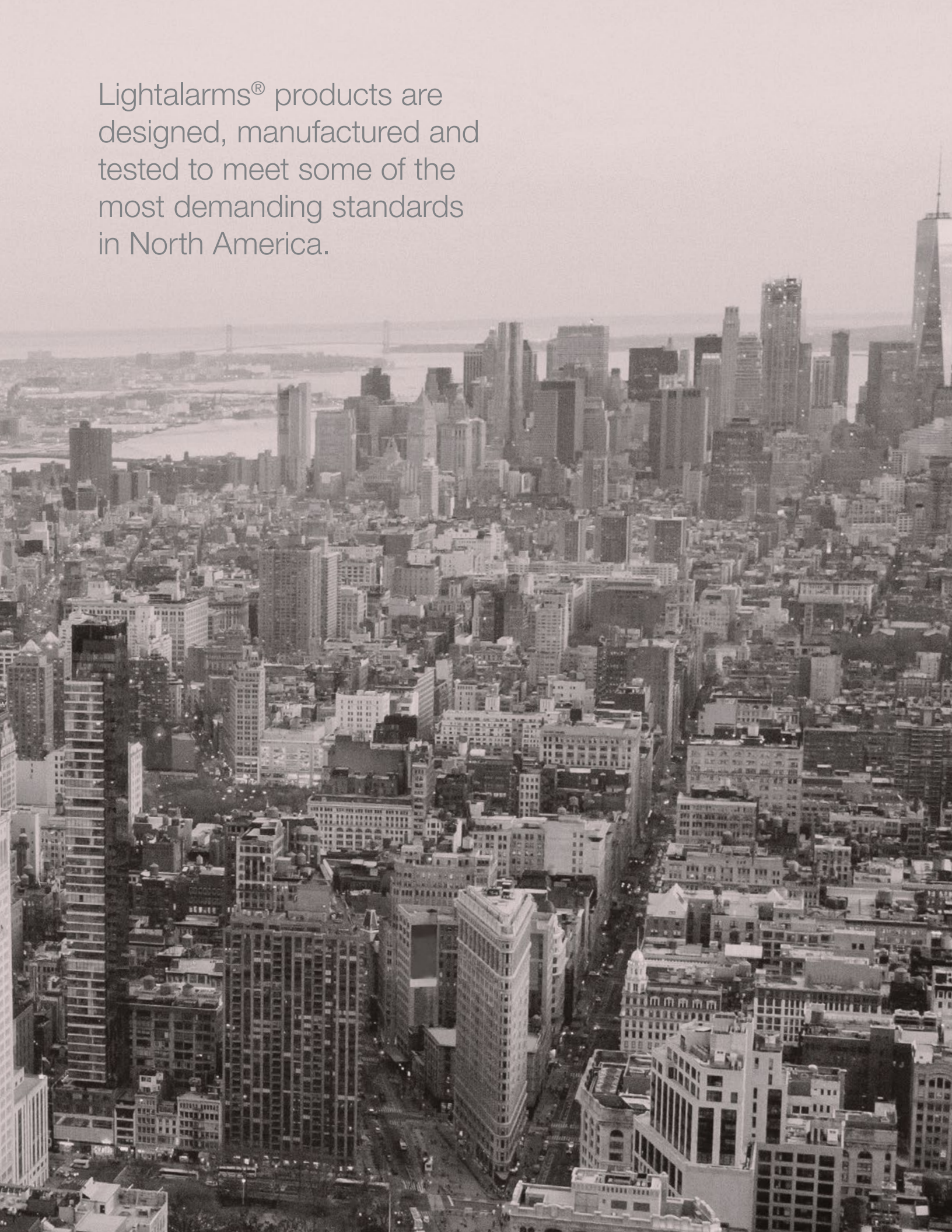


Lamp selection chart

Lamp suffix	Voltage	Wattage	Lumens	MR 16 LED lamps
				Replacement #
LD1	6	4	130	580.0097-L
LD7	12	4	170	580.0093-L
LD9	12	5	340	580.0104-L
LD10	12	6	510	580.0106-L
LD13	24	4	200	580.0098-L

¹Choose from lamp selection chart

Lightalarms® products are designed, manufactured and tested to meet some of the most demanding standards in North America.



LALDR Series



Convert new or existing LED fixtures into emergency lighting units with a constant power emergency LED driver

Housing

- High impact thermoplastic enclosure, 5VA flame retardant in black finish
- LED illuminated remote test switch

Mounting

- Suitable for installation on top or remotely

Lamp type operation

- LED lamps with 20VDC to 50VDC operating voltage
- Can be wired for normally-on, normally off or switched loads
- Lumen output depends on LED light source efficacy (Lumens/watts)

Lumen output

- Universal 120/277, 50/60Hz input
- Provides 90 minutes of emergency operation
- Surge protection
- Output classification: Class 2 compliant
- Output and input overcurrent protection
- Constant power supply in emergency mode

Battery

- Long-life maintenance-free rechargeable nickel-cadmium battery

Approvals

- Damp location listed
- UL classified for field or factory installation
- UL924 approved
- NFPA 101 life safety code, NEC, and OSHA

Warranty (subject to proper installation and maintenance)

Ballast: five-year full warranty

Detailed warranty terms located **online at:** www.lightalarms.com



Calculate lumen output during emergency operation

- Lumen output = Efficacy (Lumen/watt) X Emergency LED Driver wattage
- In order to understand luminaire efficacy:
 - Access luminaire data by logging onto Design Lites Consortium:
www.designlights.org
 - Select 'Search the DLC Qualified Product List' on the DLC homepage
 - Enter manufacturer name and P/N of luminaire under consideration in the 'search by keyword' text window
 - Select 'Search' tab to open the 'Qualified Products List'
 - Determine luminaire Lumens per Watt efficacy in 'Rated Data' specifications
 - Multiply luminaire Lumens per Watt by Emergency Output of the 'LED Driver' model under consideration

Dimensions (Dimensions are approximate and subject to change)

Model	Length	Width	Height
LALDR-5	11.46"	2.63"	1.48"
LALDR-7	15.35"	2.63"	1.48"
LALDR-11	15.35"	2.63"	1.48"
LALDR-14	19.19"	2.63"	1.48"
LALDR-17	19.19"	2.63"	1.48"

Electrical information

Model	Output	Input
LALDR-5	5 Watts	3.9 Watts
LALDR-7	7 Watts	4.8 Watts
LALDR-11	11 Watts	5.7 Watts
LALDR-14	14 Watts	6.9 Watts
LALDR-17	17 Watts	7.9 Watts

Ordering format

Series	Wattage
LALDR-	5
	7
	11
	14
	17

Example: LALDR-5

LADL Linear Emergency Fluorescent Battery pack



Convert new or existing fluorescent fixtures into emergency lighting units
emergency ballast

Housing

- Low profile steel housing contains, battery, battery charger, transfer circuit and high frequency inverter
- Optional end caps available
- Operating temperature 68°F to 122°F (20°C to 50°C)

Mounting

- Internal or external mounting to a fluorescent fixture

Lamp type operation

- Refer to ballast/lamp reference chart for specific lamp type page 135

Electronics

- Can be wired to operate switched, un-switched or normally off fixtures without affecting normal operation
- Will cold start and illuminate lamps
- Dual voltage 120/277VAC, 2.5W

Controls

- Momentary test switch allows for quick operational check of entire system

Sealed maintenance-free battery

- Nickel-cadmium battery
- Provides 90 minutes of emergency operation

Approvals

- UL 924 Listed damp location I (50°F to 104°F)
- Damp location listed


Warranty (subject to proper installation and maintenance)

Ballast: five-year full warranty

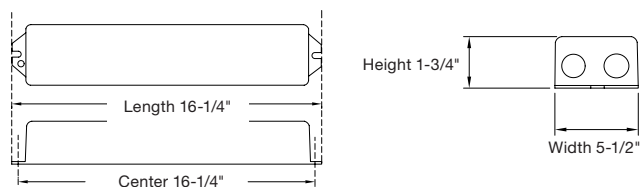
Detailed warranty terms located **online at: www.lightalarms.com**



Accessories (order as a separate item)

Description	Suffix
 External mounting kit includes wire bundle cover	071139-E
Remote test switch (Metal faceplate)	RTS
Remote test switch (Plastic faceplate)	RTS-1
Recommended for inaccessible locations. Test switch and charging indicator on a single mounting plate.	Charging Indicator light Push button test switch
Replacement test switch	TBTSP-E

Dimensions (Dimensions are approximate and subject to change)



Ordering information

- Series**
- LADL32
 - LADL7
 - LADL12
 - LADL30-N

Example: LADL32

LADL 4 Pin Series



Convert new or existing fluorescent fixtures into emergency lighting units
750 lumen emergency ballast

Housing

- Steel housing contains, battery, battery charger, transfer circuit and high frequency inverter
- Operating temperature 32°F to 122°F(0°C to 50°C)

Mounting

- Internal or external mounting to a fluorescent fixture

Lamp type operation

- Refer to ballast/lamp reference chart for specific lamp type page 135

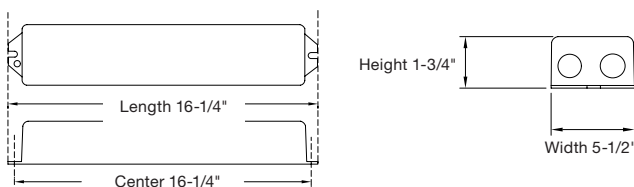
Lumen output

- (1) Lamp 350-750 lumens
- (2) Lamps 425-750 lumens

Electronics

- Can be wired to operate switched, un-switched or normally off fixtures without affecting normal operation
- Will cold start and illuminate lamps
- High capacity, automatic, dust-tight instantaneous transfer relay
- Low voltage disconnect prevents over discharge of battery
- Automatic brownout protection
- Battery connector prevents battery discharge during installation

Dimensions (Dimensions are approximate and subject to change)



Controls

- Red charger monitor LED indicates charging of the battery and AC present
- Momentary test switch allows for quick operational check of entire system

Sealed maintenance-free battery

- Nickel-cadmium battery
- Provides 90 minutes of emergency operation

Power requirements

- Dual voltage 120/277VAC, 60Hz, 1.8W

Approvals

- UL 924 Standards
- Damp location listed

Warranty (subject to proper installation and maintenance)

Ballast: five-year full warranty

Detailed warranty terms located **online at: www.lightalarms.com**



Accessories (order as a separate item)

Description	Suffix
Remote test switch (Metal faceplate)	RTS
Remote test switch (Plastic faceplate)	RTS-1
Replacement test switch	TBTSP-E

Ordering information

Series
LADL20-N

Example: LADL20-N

Low Capacity Mini Inverter Series

Interruptible unit equipment 32W or 55W



Provide power to existing lighting to function as emergency lighting when main power fails. Self-contained sine wave output inverter systems are designed to meet the unique needs of emergency lighting loads.

Construction

- Heavy-duty steel cabinet
- White baked on powder paint coating provides scratch and corrosion resistance

Mounting

- Surface mount
- Recessed T-bar (plenum rated)

Lamp types operated

- LED
- Incandescent
- Fluorescent
- Operates switched, normally-on or normally-off fixture types, incandescent
- LED, fluorescent and ballast combinations, including triac dimmable ballasts

Load capacity

- 32W & 55W
- Allows for remote mounting of the emergency fixtures at distances of up to 1000 feet
- May accept load when load feature power factor range from 0.44 lead to 0.44 lag

Electronics

- Pure sine wave inverter
- Temperature compensated charger
- Low battery voltage disconnect
- Unit comes standard with electronic lockout and brownout circuits

Controls

- Control panel with momentary test switch, AC-On, Charger-On and
- Inverter-On LED indicators
- Sealed maintenance-free battery
- 12V oversized valve regulated lead-calcium (VRLA) battery
- Provides 90 minutes of emergency operation

Power requirements

- Choice of voltage: 120V in/120V out or 277V in/277V out operation, 60Hz

Approvals

- UL 924 Standard
- Meets or exceeds all National Electric Codes and Life Safety Code
- Emergency lighting requirements

Warranty (subject to proper installation and maintenance)

- Unit has a three year full warranty
- Battery has a three-year full, plus an additional three year pro-rata warranty

Detailed warranty terms located online at: www.lightalarms.com



Specifications

Transfer time	Voltage regulation on emergency	Frequency regulation on emergency	Load power factor range	Operating temperature
Less than 1 second	+/- 5%	60 Hz +/- 0.5%	0.44 lead to 0.44 lag	68° to 86°F (20° to 30°C)

Electrical characteristics and dimensions

System type	Power rating	Sine wave	Installation	Cabinet dimensions			Number of battery	Weight
				W"	H"	D"		120V & 277V
LMILC32-S	32W/VA	Pure	Surface mount	14-3/4"	6-7/8"	3-1/8"	1	14 lbs
LMILC32-T	32W/VA	Pure	Recessed T-bar	23-7/8"	6-1/4"	4"	1	15 lbs
LMILC55-S	55W/VA	Pure	Surface mount	14-3/4"	6-7/8"	4-3/8"	1	18 lbs
LMILC55-T	55W/VA	Pure	Recessed T-bar	23-7/8"	6-1/4"	4"	1	19 lbs

Note: For wiring diagram, please refer to instruction sheets.

Power consumption and unit rating

Model number	Input rating	Emergency power available for load (90min)
LMILC32	41W/VA	32W
LMILC55	64W/VA	55W

Ordering format

Series	Capacity	Voltage in/out	Battery type	Mounting
LMILC	32 = 32W/VA 55 = 55W/VA	Blank = 120/277VAC	Blank = Lead-calcium	-S = Surface mount housing -T = Plenum rated ceiling T-grid mount housing

Example: LMILC32-S

Mini Inverter Series

Interruptible unit equipment standard with non-audible improved self-diagnostics circuitry



Provide power to existing lighting to function as emergency lighting when main power fails. Self-contained sine wave output inverter systems are designed to meet the unique needs of emergency lighting loads.

Construction

- 14-gauge steel
- White semi-gloss powder-coat paint finish

Mounting

- Surface mount
- Optional recessed T-bar (125W unit only)

Lamp types operated

- LED
- Incandescent
- Fluorescent
- Operates switched, normally-on or normally-off fixture types, incandescent
- Incandescent, LED, fluorescent lamps and ballast combinations, including triac dimmable ballasts (consult factory if DALI dimming)

Load capacity

- 125W, 250W, 400W or 720W
- Line voltage allows for remote mounting of the emergency fixtures at distances up to 1000 feet
- May accept load to its full capacity when load feature power factor of 0.9 for 250W model and 0.8 for 125, 400 and 720W model

Electronics

- High-efficiency pure sine wave inverter at 250W capacity or higher
- Temperature compensated charger
- Replaceable output fuse protection
- Low battery voltage disconnect
- Unit comes standard with electronic lockout and brownout circuits

Controls

- Standard with a non-audible self diagnostic/charger is fully self-contained, fully automatic microcontrollerbased system
- Optional audible auto diagnostic available
- Standard lighting control override for 0-10V dimming systems

Nexus® option

- Units equipped with Nexus® self-testing monitoring system circuitry shall selftest, in accordance with NFPA101, Life Safety Code minimum 30 seconds every 30 days, 30 minutes every six months and 90 minutes annually as well as keep a history of all testing logs, plus feature a real-time diagnoses, as well as, be able to locate exact fixture location while notifying service personnel to the status of the fixture via email notification. Nexus® system interface with an improved minimum load lost detection of 10%

Sealed maintenance-free battery

- 12V oversized valve regulated lead-calcium (VRLA) battery
- Provides 90 minutes of emergency operation

Power requirements

- Choice of voltage 120V in/120V out or 277V in/277V out operation, 60Hz

Approvals

- UL 924 Standard
- Meets or exceeds all National Electric Code and Life Safety Code Emergency Lighting Requirements

Warranty (subject to proper installation and maintenance)

- Battery has a 3-year full, plus 7-year pro-rata warranty
- Unit has a three-year warranty

Detailed warranty terms located [online at: www.lightalarms.com](http://www.lightalarms.com)



Replacement battery

Series	Part number
LMIU-125	860.0024-L
LMIU-250	2X 860.0024-L
LMIU-400	2X 860.0043-L
LMIU-720	2X 860.0096-L

Specifications

Transfer time	Voltage regulation on emergency	Frequency regulation on emergency	Load power factor range	Operating temperature
Less than 1 second	+/- 3%	60 Hz +/- 1%	250W model: 0.9 leading to 0.9 lagging	68°F to 86°F (20° to 30°C)
-	-	-	125, 400 & 720W models: 0.8 leading to 0.8 lagging	-

Electrical characteristics and dimensions

Power rating	Sine wave	Installation	Cabinet dimensions			Number of battery	Weight	Weight w/o battery
			W"	H"	D"		120V & 277V	120V & 277V
125W	Modified	T-Bar	24"	6.5"	8"	1	43 lbs	20 lbs
125W	Modified	Wall	16.5"	12.2"	7.3"	1	41 lbs	18.5 lbs
250W	Pure	Wall	27"	12.2"	7.3"	2	76 lbs	30 lbs
400W	Pure	Wall	24"	20"	10.5"	2	128 lbs	50 lbs
720W	Pure	Wall	24"	20"	14.5"	2	185 lbs	72 lbs

Note: For wiring diagram, please refer to instruction sheets.

Power consumption and unit rating

Model number	AC specs	Emergency power available for load			
		90 minutes	2H	3H	4H
LMIU-125	120 / 277VAC 1.15 / 0.50 Amps	125W	83W	62W	47W
LMIU-250	120 / 277VAC 2.28 / 0.99 Amps	250W	167W	125W	94W
LMIU-400	120 / 277VAC 3.73 / 1.62 Amps	400W	300W	200W	150W
LMIU-720	120 / 277VAC 6.90 / 4.00 Amps	720W	480W	360W	270W

Ordering format

Series	Capacity	Voltage in/out	Diagnostic feature	Options
LMIU	-125 = 125W -250 = 250W -400 = 400W -720 = 720W	Blank = 120/120VAC or 277/277VAC	Blank = Includes improved self-diagnostics (non-audible) ¹ -ID = Improved self-diagnostics (audible) ¹ -NID = No self-test/Self-diagnostic -NEXRF = Nexus® wireless	-D3 = Time delay (15 minutes) -SAC = Service alarm contact ² -T = Recessed T-bar mounting (125W unit only)

Example: LMIU-720

¹Minimum load required: 10% of unit capacity

²Service alarm contact (SAC) shall provide a 24V signal, the charger board will indicate a fault by choosing a contact. Not available with 720 capacity

1000W Capacity Mini Inverter Series

Interruptible unit equipment standard with non-audible improved self-diagnostics circuitry



Provide power to existing lighting to function as emergency lighting when main power fails. Self-contained sine wave output inverter systems are designed to meet the unique needs of emergency lighting loads.

Housing

- 14-Gauge Steel
- White semi-gloss powder-coat paint finish

Mounting

- Surface mount

Compatible loads

- LED
- Incandescent
- Fluorescent
- Operating switched, normally-on or normally-off fixture types
- 0-10V dimming
- Triac dimming
- DALI dimming - consult factory

Load capacity

- 1000W
- Line voltage allows for remote mounting of the emergency fixtures at distances up to 1000 feet

Electronics

- High-efficiency pure sine wave inverter
- Temperature compensated charger
- Replaceable output fuse protection
- Low battery voltage disconnect
- Unit comes standard with electronic lockout and brownout circuits

Controls

- Standard with a non-audible self diagnostic/charger is fully self-contained, fully automatic microcontroller-based system
- Optional audible auto diagnostic available
- Optional no Advanced Diagnostics available
- No Advanced Diagnostics option must be selected in conjunction with transfer switches
- Standard lighting control override for 0-10V dimming systems
- Optional 4 output circuits allow for multiple switch compatibility

Sealed maintenance-free battery

- 12V valve regulated lead-calcium (VRLA) batteries
- Provides 90 minutes of emergency operation power requirements
- Choice of voltage 120V input/120V output or 277V input/277V output operation, 60Hz

Approvals

- UL 924 Standard
- Meets or exceeds all National Electric Code and Life Safety Code Emergency Lighting Requirements

Warranty

(subject to proper installation and maintenance)

Unit has a three-year limited warranty

Detailed warranty terms located **online at:** www.lightalarms.com



Replacement battery

Series	Part number
LMIU-1000	4 X 860.0043

Specifications

Transfer time	Voltage regulation on emergency	Frequency regulation on emergency	Load power factor range	Operating temperature
Less than 1 second	+/- 3%	60 Hz +/- 1%	0.8 at 120V 1 at 277V	68°F to 86°F (20° to 30°C)

Electrical characteristics and dimensions

Power rating	Sine wave	Installation	Cabinet dimensions			Number of batteries	Weight	Weight w/o battery
			W"	H"	D"		120V & 277V	120V & 277V
1000W	Pure	Floor/ wall	24"	40.75"	10.5"	4	266 lbs	114 lbs
1000W-4C	Pure	Floor/ wall	24"	40.75"	14.5"	4	320 lbs	198 lbs

Note: For wiring diagram, please refer to the specification sheets

Power consumption and unit rating

Model number	Ac specs	Emergency power available for load			
		90 minutes	2H	3H	4H
LMIU-1000	120 / 277VAC 12.8 / 5.3 Amps	1000W	807W	604W	489W

Ordering format

Series	Capacity	Voltage in/out	Diagnostic feature	Options
LMIU	-1000 =1000W	Blank = 120/120VAC or 277/277VAC	Blank = Includes improved self-diagnostics (non-audible) ¹ -ID = Improved self-diagnostics (audible) ¹ -NID = No self-test/Self-diagnostic -NEXRF = Nexus® wireless	-D3 = Time delay (15 minutes) -SAC = Service alarm contact ² -4C = 4 output circuits

Example: LMIU-1000

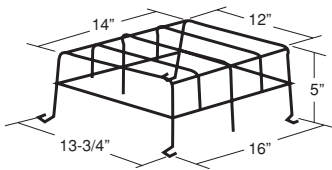
¹Minimum load required: 10% of unit capacity

²Service alarm contact (SAC) shall be provided a 24V signal, the charger board will indicate a fault by closing a contact.

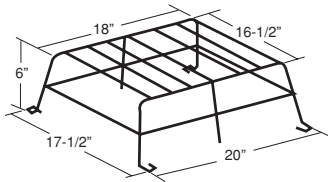
Wire guards

Designed to increase the protection level and deter vandalism to Exit signs, Battery units and Remote fixtures

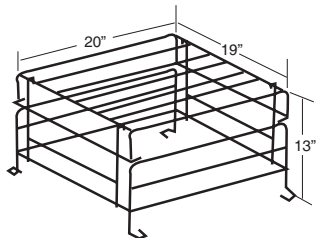
Catalog number WG1-L	
Exit signs (wall mount)	GX, GXE Series (6" only) XD, XDN Series TX, TXE Series UX4 Series, GRANDE™ Exit Series QLX500, QLXN500 Series XT Series
Battery units	Grande™ battery unit (wall mount) MG Series (ELF3, DR1130 Heads)



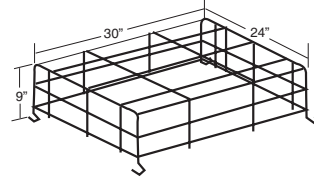
Catalog number WG2-L	
Exit signs	Grande™ (combination unit, wall mount)
Battery units	PG & P12G Series PN & P12N Series (A cabinet)
Remote fixtures	DR 3130



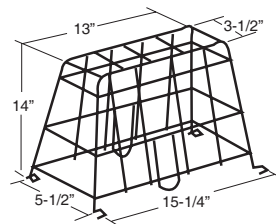
Catalog number WG3-L	
Battery units	PN & P12N Series (B Cabinet) PQ & P12Q Series S12E4 Series



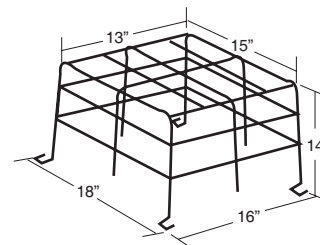
Catalog number WG4-L	
Exit signs	QLXN2SQ (Combination Unit, Wall Mount)
Battery units	S12E5, S12E6 & S24E4 Series



Catalog number WG5-L	
Exit signs (ceiling & end mount)	GX, GXE Series (6" only) XD, XDN Series TX, TXE Series UX4 Series, GRANDE™ Exit Series QLX500, QLXN500 Series XT Series



Catalog number WG6-L	
Exit signs	UX4 (combination unit, wall mount)
Battery units	RD Series



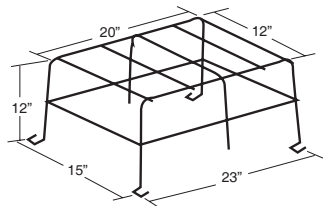
Catalog number WG8-L	
Remote fixtures	DR1130, DR 2130; ELF3, ELF3D, ELF3T

Wire guards

Catalog number WG10-L

Battery units

LCA-2 SQ Series
LCA-2 LED Series



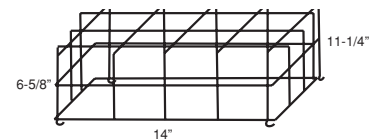
Catalog number WG13-L

Exit signs (wall mount)

GX, GXE Series (6" only)
XD, XDN Series
XL Series
TX, TXE Series
UX4 Series
GRANDE™ Exit Series
QLX500, QLXN500 Series
XT Series

Battery units

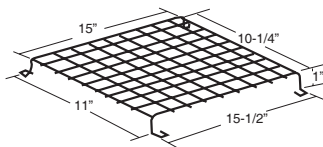
LCA-2 SQ Series
LCA-2 LED Series



Catalog number WG11-L

Exit signs (wall mount)

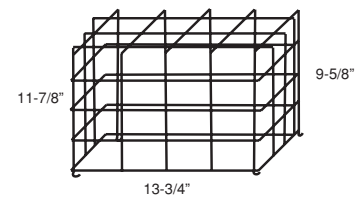
Floor proximity recessed exit
TX, TXE Series



Catalog number WG14-L

Exit signs (ceiling mount)

GX, GXE Series (6" & 8")
XD, XDN Series
TX, TXE Series
UX4 Series
GRANDE™ Exit Series
QLX500, QLXN500 Series



Catalog number WG12-L

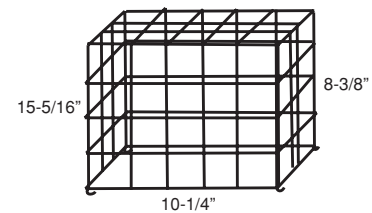
Exit signs (wall mount)

XD, XDN Series
TX, TXE Series
UX4 Series,
GRANDE™ Exit Series
QLX500, QLXN500 Series
XT Series

Catalog number WG15-L

Exit signs (wall mount)

GX, GXE Series (6" & 8")
XD, XDN Series
TX, TXE Series
UX4 Series,
GRANDE™ Exit Series
QLX500, QLXN500 Series



Lightalarms® – your partner in success

Satisfaction at every step of the process

Our North American team works with you to make sure you have the most efficient solution that meets your specifications. Lightalarms® products are designed for durability, reliability, and ease of use. With Lightalarms®, your solution will be:

- Easy to install and maintain
- Compliant with codes, regulations and standards – certifications available
- High quality and reliable for maximum safety

Expect fast shipping, prompt service, and ongoing support

Not only can we provide extremely short lead times, we also offer product customization at the facilities in our North American manufacturing center. Our engineering team and product designers work together as a team of specialists to create innovative new products and meet special requirements. We take great pride in developing products for challenging applications.

With Lightalarms® you have peace of mind that your life safety equipment will perform when you need it.





Inside Sales | Customer Support

Tel : 1-888-935-3610

Fax: 1-888-867-1566

Technical Support

Tel.: 1-888-552-6467

Fax: 1-800-316-4515

lightalarms.com



2116 Merrick Avenue

Suite 3003

Merrick, NY 11566

www.russolighting.com

Tel.: 516-997-4140

Fax: 516-997-4250

by ABB

All information contained in this brochure is subject to change due to engineer design, errors and omissions. Illustrations and diagrams within this brochure may vary from actual products.

©2022 ABB. All rights reserved. Rev: 04/2023
Order no. LA-NYC-Approved

